

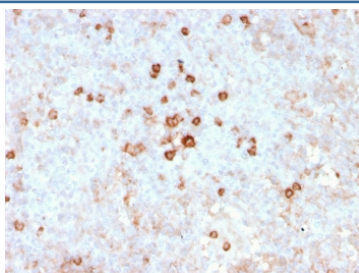
## Recombinant CD14 Antibody [clone rLPSR/2408] (V8222)

Catalog No.	Formulation	Size
V8222-100UG	0.2 mg/ml in 1X PBS with 0.1 mg/ml BSA (US sourced) and 0.05% sodium azide	100 ug
V8222-20UG	0.2 mg/ml in 1X PBS with 0.1 mg/ml BSA (US sourced) and 0.05% sodium azide	20 ug
V8222SAF-100UG	1 mg/ml in 1X PBS; BSA free, sodium azide free	100 ug

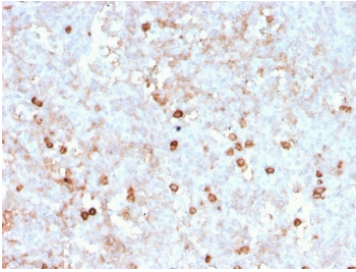
Recombinant **MOUSE MONOCLONAL**

[Bulk quote request](#)

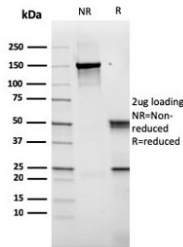
<b>Availability</b>	1-3 business days
<b>Species Reactivity</b>	Human
<b>Format</b>	Purified
<b>Clonality</b>	Recombinant Mouse Monoclonal
<b>Isotype</b>	Mouse IgG1, kappa
<b>Clone Name</b>	rLPSR/2408
<b>Purity</b>	Protein G affinity chromatography
<b>UniProt</b>	P08571
<b>Localization</b>	Cell surface, Secreted, Cytoplasmic (Golgi)
<b>Applications</b>	Immunohistochemistry (FFPE) : 1-2ug/ml
<b>Limitations</b>	This recombinant CD14 antibody is available for research use only.



IHC staining of FFPE human spleen with recombinant CD14 antibody (clone rLPSR/2408). HIER: boil tissue sections in pH 9 10mM Tris with 1mM EDTA for 20 min and allow to cool before testing.



IHC staining of FFPE human spleen with recombinant CD14 antibody (clone rLPSR/2408). HIER: boil tissue sections in pH 9 10mM Tris with 1mM EDTA for 20 min and allow to cool before testing.



SDS-PAGE analysis of purified, BSA-free recombinant CD14 antibody (clone rLPSR/2408) as confirmation of integrity and purity.

## Description

Recognizes a protein of 55kDa, identified as CD14 (also known lipopolysaccharide receptor). CD14 is expressed strongly on monocytes and macrophage and weakly on the surface of neutrophils. CD14 is anchored to cells by linkage to glycosylphosphatidylinositol (GPI) and functions as a high affinity receptor for complexes of LPS and LPS binding protein (LBP). Soluble CD14, also binding to LPS, acts at physiological concentration as an LPS agonist and has, at higher concentrations, an LPS antagonizing effect in cell activation.

## Application Notes

Optimal dilution of the recombinant CD14 antibody should be determined by the researcher.

## Immunogen

A recombinant human partial protein (amino acids 25-148) was used as the immunogen for this recombinant CD14 antibody.

## Storage

Store the recombinant CD14 antibody at 2-8oC (with azide) or aliquot and store at -20oC or colder (without azide).