

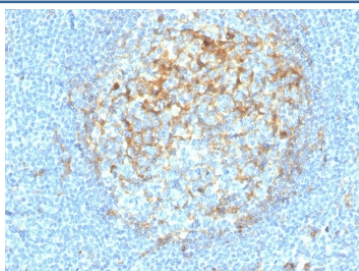
## Recombinant CD14 Antibody [clone LPSR/4180R] (V8484)

Catalog No.	Formulation	Size
V8484-100UG	0.2 mg/ml in 1X PBS with 0.1 mg/ml BSA (US sourced) and 0.05% sodium azide	100 ug
V8484-20UG	0.2 mg/ml in 1X PBS with 0.1 mg/ml BSA (US sourced) and 0.05% sodium azide	20 ug
V8484SAF-100UG	1 mg/ml in 1X PBS; BSA free, sodium azide free	100 ug

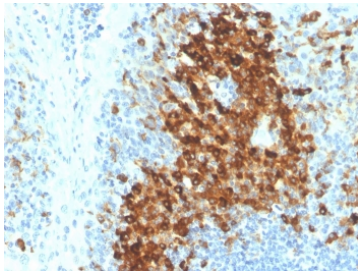
Recombinant **RABBIT MONOCLONAL**

[Bulk quote request](#)

<b>Availability</b>	1-3 business days
<b>Species Reactivity</b>	Human
<b>Format</b>	Purified
<b>Clonality</b>	Recombinant Rabbit Monoclonal
<b>Isotype</b>	Rabbit IgG
<b>Clone Name</b>	LPSR/4180R
<b>Purity</b>	Protein A affinity chromatography
<b>UniProt</b>	P08571
<b>Localization</b>	Cell surface, Secreted, Cytoplasmic (Golgi)
<b>Applications</b>	Immunohistochemistry (FFPE) : 1-2ug/ml for 30 minutes at RT
<b>Limitations</b>	This recombinant CD14 antibody is available for research use only.



IHC staining of FFPE human tonsil with recombinant CD14 antibody (clone LPSR/4180R). HIER: boil tissue sections in pH 9 10mM Tris with 1mM EDTA for 20 min and allow to cool before testing.



IHC staining of FFPE human tonsil with recombinant CD14 antibody (clone LPSR/4180R). HIER: boil tissue sections in pH 9 10mM Tris with 1mM EDTA for 20 min and allow to cool before testing.

## Description

CD14 is receptor for endotoxin and apoptotic cells. It is expressed by monocytes/histiocytes, Langerhans cell histiocytosis and giant cell tumor. In cultures, a subpopulation of Kaposi sarcoma cells express CD14. In differential diagnosis, CD14 is more specific than CD68 in the identification of monocytes/histiocytes and associated neoplasias.

## Application Notes

Optimal dilution of the recombinant CD14 antibody should be determined by the researcher.

## Immunogen

A portion of amino acids 1-100 from the human protein was used as the immunogen for the recombinant CD14 antibody.

## Storage

Store the recombinant CD14 antibody at 2-8°C (with azide) or aliquot and store at -20°C or colder (without azide).