

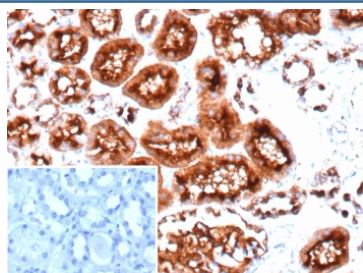
Recombinant CD10 Antibody / Neprilysin / CALLA [clone MME/9617R] (V5445)

Catalog No.	Formulation	Size
V5445-100UG	0.2 mg/ml in 1X PBS with 0.1 mg/ml BSA (US sourced), 0.05% sodium azide	100 ug
V5445-20UG	0.2 mg/ml in 1X PBS with 0.1 mg/ml BSA (US sourced), 0.05% sodium azide	20 ug
V5445SAF-100UG	1 mg/ml in 1X PBS; BSA free, sodium azide free	100 ug

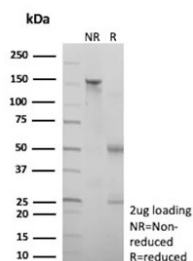
Recombinant **RABBIT MONOCLONAL**

[Bulk quote request](#)

Availability	1-3 business days
Species Reactivity	Human
Format	Purified
Host	Rabbit
Clonality	Recombinant Rabbit Monoclonal
Isotype	Rabbit IgG, kappa
Clone Name	MME/9617R
Purity	Protein A/G affinity
UniProt	P08473
Localization	Cytoplasm, Cell membrane
Applications	Immunohistochemistry (FFPE) : 1-2ug/ml
Limitations	This recombinant CD10 antibody is available for research use only.



IHC staining of FFPE human colon tissue with recombinant CD10 antibody (clone MME/9617R). Inset: PBS used in place of primary Ab (secondary Ab negative control).



SDS-PAGE analysis of purified, BSA-free recombinant CD10 antibody (clone MME/9617R) as confirmation of integrity and purity.

Description

Recognizes a 100kDa glycoprotein, identified as CD10, also known as Common Acute Lymphocytic Leukemia Antigen (CALLA) and Neprilysin. It is a cell surface enzyme with neutral metalloendopeptidase activity, which inactivates a variety of biologically active peptides. CD10 is expressed on the cells of lymphoblastic, Burkitts, and follicular germinal center lymphomas, and on cells from patients with chronic myelocytic leukemia (CML). It is also expressed on the surface of normal early lymphoid progenitor cells, immature B cells within adult bone marrow and germinal center B cells within lymphoid tissue. CD10 is also present on breast myoepithelial cells, bile canaliculi, fibroblasts, with especially high expression on the brush border of kidney and gut epithelial cells.

Application Notes

Optimal dilution of the recombinant CD10 antibody should be determined by the researcher.

Immunogen

A recombinant fragment (within amino acids 400-600) of human CD10 protein was used as the immunogen for the recombinant CD10 antibody.

Storage

Aliquot the recombinant CD10 antibody and store frozen at -20oC or colder. Avoid repeated freeze-thaw cycles.