

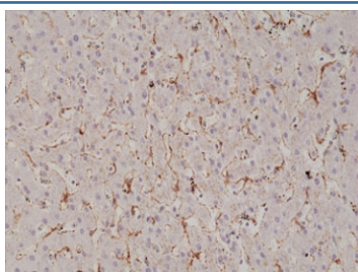
## Recombinant Caveolin-1 Antibody [clone RM325] (R20350)

Catalog No.	Formulation	Size
R20350-0.1ML	Antibody in PBS with 50% glycerol, 1% BSA and 0.09% sodium azide	100 ul

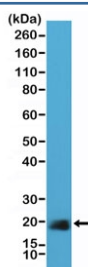
Recombinant **RABBIT MONOCLONAL**

[Bulk quote request](#)

Availability	1-3 business days
Species Reactivity	Human
Format	Purified
Host	Rabbit
Clonality	Recombinant Rabbit Monoclonal
Isotype	Rabbit IgG
Clone Name	RM325
Purity	Protein A purified from animal origin-free supernatant
UniProt	Q03135
Localization	Cytoplasm, cell membrane
Applications	Immunohistochemistry (FFPE) : 1:500-1:1000 Western Blot : 1:5000-1:40000
Limitations	This recombinant Caveolin-1 antibody is available for research use only.



IHC staining of FFPE human liver tissue with recombinant Caveolin-1 antibody at 1:1000.



Western blot testing of human HeLa cell lysate with recombinant Caveolin-1 antibody at 1:40,000. Predicted molecular weight ~21 kDa.

## Description

This antibody reacts to human Caveolin-1.

## Application Notes

The stated application concentrations are suggested starting points. Titration of the recombinant Caveolin-1 antibody may be required due to differences in protocols and secondary/substrate sensitivity.

## Immunogen

A peptide corresponding to the C-terminus of human Caveolin-1 was used as the immunogen for the recombinant Caveolin-1 antibody.

## Storage

Store the recombinant Caveolin-1 antibody at -20oC.