

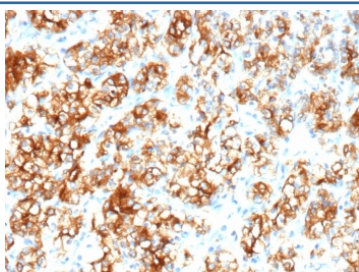
## Recombinant Carbonic Anhydrase 9 Antibody / CA9 [clone rPN-15] (V5605)

Catalog No.	Formulation	Size
V5605-100UG	0.2 mg/ml in 1X PBS with 0.1 mg/ml BSA (US sourced), 0.05% sodium azide	100 ug
V5605-20UG	0.2 mg/ml in 1X PBS with 0.1 mg/ml BSA (US sourced), 0.05% sodium azide	20 ug
V5605SAF-100UG	1 mg/ml in 1X PBS; BSA free, sodium azide free	100 ug

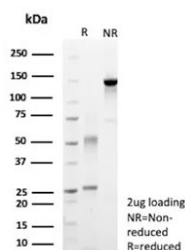
Recombinant **MOUSE MONOCLONAL**

[Bulk quote request](#)

<b>Availability</b>	1-3 business days
<b>Species Reactivity</b>	Human
<b>Format</b>	Purified
<b>Clonality</b>	Recombinant Mouse Monoclonal
<b>Isotype</b>	Mouse IgG2b, kappa
<b>Clone Name</b>	rPN-15
<b>Purity</b>	Protein A/G affinity
<b>UniProt</b>	Q16790
<b>Localization</b>	Cell membrane, Nucleus
<b>Applications</b>	Immunohistochemistry (FFPE) : 1-2ug/ml
<b>Limitations</b>	This recombinant Carbonic Anhydrase 9 antibody is available for research use only.



IHC staining of FFPE human renal cell carcinoma tissue with recombinant Carbonic Anhydrase 9 antibody (clone rPN-15). HIER: boil tissue sections in pH 9 10mM Tris with 1mM EDTA for 20 min and allow to cool before testing.



SDS-PAGE analysis of purified, BSA-free recombinant Carbonic Anhydrase 9 antibody (clone rPN-15) as confirmation of integrity and purity.

## Description

In normal kidney, CA9 is localized along the brush border of the pars convoluta and pars recta segments of the proximal tubule, as well as focally along the luminal surface of Bowman's capsule adjoining the outgoing proximal tubule. Reportedly, CA9 is expressed by 93% of primary and 84% of metastatic renal cell carcinomas. This MAb may be useful in the investigations of carcinomas of proximal nephrogenic differentiation especially those showing tubular differentiation.

## Application Notes

Optimal dilution of the recombinant Carbonic Anhydrase 9 antibody should be determined by the researcher.

## Immunogen

Recombinant full-length human CA9 protein was used as the immunogen for the recombinant Carbonic Anhydrase 9 antibody.

## Storage

Aliquot the recombinant Carbonic Anhydrase 9 antibody and store frozen at -20oC or colder. Avoid repeated freeze-thaw cycles.