

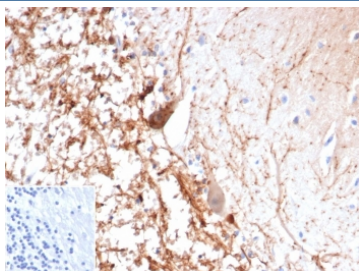
Recombinant Calretinin Antibody / CALB2 / Calbindin 2 [clone CALB2/4688R] (V5811)

Catalog No.	Formulation	Size
V5811-100UG	0.2 mg/ml in 1X PBS with 0.1 mg/ml BSA (US sourced), 0.05% sodium azide	100 ug
V5811-20UG	0.2 mg/ml in 1X PBS with 0.1 mg/ml BSA (US sourced), 0.05% sodium azide	20 ug
V5811SAF-100UG	1 mg/ml in 1X PBS; BSA free, sodium azide free	100 ug

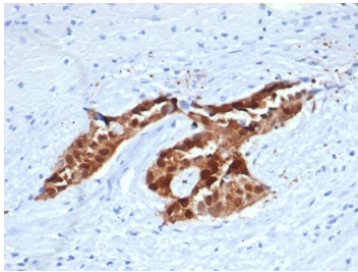
Recombinant **RABBIT MONOCLONAL**

[Bulk quote request](#)

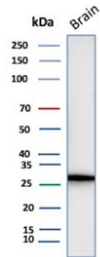
Availability	1-3 business days
Species Reactivity	Human
Format	Purified
Host	Rabbit
Clonality	Recombinant Rabbit Monoclonal
Isotype	Rabbit IgG, kappa
Clone Name	CALB2/4688R
Purity	Protein A affinity
UniProt	P22676
Localization	Cytoplasm, Nucleus
Applications	Western Blot : 2-4ug/ml Immunohistochemistry (FFPE) : 1-2ug/ml
Limitations	This recombinant Calretinin antibody is available for research use only.



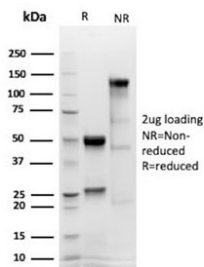
IHC staining of FFPE human brain tissue with recombinant Calretinin antibody (clone CALB2/4688R). Inset: PBS used in place of primary Ab (secondary Ab negative control).
HIER: boil tissue sections in pH 9 10mM Tris with 1mM EDTA for 20 min and allow to cool before testing.



IHC staining of FFPE human mesothelioma tissue with recombinant Calretinin antibody (clone CALB2/4688R). Inset: PBS used in place of primary Ab (secondary Ab negative control). HIER: boil tissue sections in pH 9 10mM Tris with 1mM EDTA for 20 min and allow to cool before testing.



Western blot testing of human brain tissue lysate with recombinant Calretinin antibody (clone CALB2/4688R). Predicted molecular weight ~29 kDa.



SDS-PAGE analysis of purified, BSA-free recombinant Calretinin antibody (clone CALB2/4688R) as confirmation of integrity and purity.

Description

It recognizes a protein of about 29kDa, which is identified as Calretinin (also known as Calbindin 2). Calretinin is a vitamin D-dependent calcium-binding protein involved in calcium signaling. It is present in subsets of neurons throughout the brain and spinal cord, including sensory ganglia. Antibody to calretinin is useful in differentiating mesothelioma from adenocarcinomas of the lung. It also aids in differentiating adrenal cortical neoplasms from pheochromocytomas.

Application Notes

Optimal dilution of the recombinant Calretinin antibody should be determined by the researcher.

Immunogen

A recombinant human Calretinin partial protein (within amino acids 23-242) was used as the immunogen for the recombinant Calretinin antibody.

Storage

Aliquot the recombinant Calretinin antibody and store frozen at -20oC or colder. Avoid repeated freeze-thaw cycles.

