

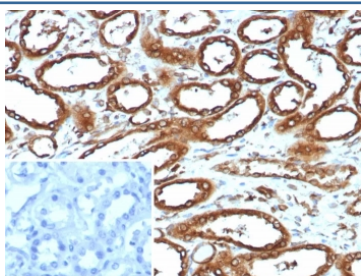
Recombinant Calnexin Antibody [clone CANX/9147R] (V5530)

Catalog No.	Formulation	Size
V5530-100UG	0.2 mg/ml in 1X PBS with 0.1 mg/ml BSA (US sourced), 0.05% sodium azide	100 ug
V5530-20UG	0.2 mg/ml in 1X PBS with 0.1 mg/ml BSA (US sourced), 0.05% sodium azide	20 ug
V5530SAF-100UG	1 mg/ml in 1X PBS; BSA free, sodium azide free	100 ug

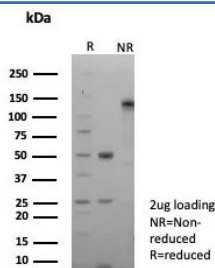
Recombinant **RABBIT MONOCLONAL**

[Bulk quote request](#)

Availability	1-3 business days
Species Reactivity	Human
Format	Purified
Clonality	Recombinant Rabbit Monoclonal
Isotype	Rabbit IgG, kappa
Clone Name	CANX/9147R
Purity	Protein A/G affinity
UniProt	P27824
Localization	Cytoplasm
Applications	Immunohistochemistry (FFPE) : 1-2ug/ml Western Blot : 2-4ug/ml
Limitations	This recombinant Calnexin antibody is available for research use only.



IHC staining of FFPE human renal cell carcinoma tissue with recombinant Calnexin antibody (clone CANX/9147R). Inset: PBS used in place of primary Ab (secondary Ab negative control). HIER: boil tissue sections in pH 9 10mM Tris with 1mM EDTA for 20 min and allow to cool before testing.



SDS-PAGE analysis of purified, BSA-free recombinant Calnexin antibody (clone CANX/9147R) as confirmation of integrity and purity.

Description

It recognizes a protein of 90kDa, which is identified as Calnexin. Secretory and transmembrane proteins are synthesized on polysomes and translocate into the endoplasmic reticulum (ER) where they are often modified by the formation of disulfide bonds, amino-linked glycosylation and folding. To help proteins fold properly, the ER contains a pool of molecular chaperones including calnexin. It is a calcium-binding, endoplasmic reticulum (ER)-associated protein that interacts transiently with newly synthesized N-linked glycoproteins, facilitating protein folding and assembly. It may also play a central role in the quality control of protein folding by retaining incorrectly folded protein subunits within the ER for degradation.

Application Notes

Optimal dilution of the recombinant Calnexin antibody should be determined by the researcher.

Immunogen

A recombinant N-terminal region fragment of human Calnexin protein (within amino acids 1-300) was used as the immunogen for the recombinant Calnexin antibody.

Storage

Aliquot the recombinant Calnexin antibody and store frozen at -20oC or colder. Avoid repeated freeze-thaw cycles.