

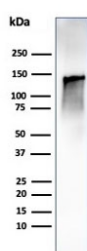
Recombinant Caldesmon Antibody / CALD1 / CAD (HMW) [clone CALD1/1424R] (V7252)

Catalog No.	Formulation	Size
V7252-100UG	0.2 mg/ml in 1X PBS with 0.1 mg/ml BSA (US sourced) and 0.05% sodium azide	100 ug
V7252-20UG	0.2 mg/ml in 1X PBS with 0.1 mg/ml BSA (US sourced) and 0.05% sodium azide	20 ug
V7252SAF-100UG	1 mg/ml in 1X PBS; BSA free, sodium azide free	100 ug
V7252IHC-7ML	Prediluted in 1X PBS with 0.1 mg/ml BSA (US sourced) and 0.05% sodium azide; *For IHC use only*	7 ml

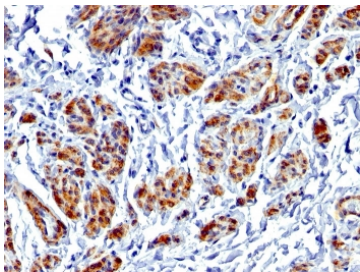
Recombinant **RABBIT MONOCLONAL**

[Bulk quote request](#)

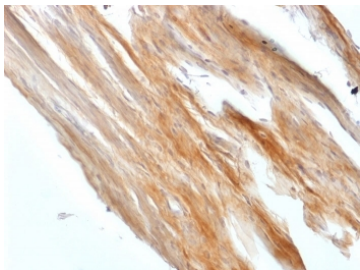
Availability	1-3 business days
Species Reactivity	Human, Rat
Format	Purified
Clonality	Recombinant Rabbit Monoclonal
Isotype	Rabbit IgG, kappa
Clone Name	CALD1/1424R
Purity	Protein A affinity chromatography
UniProt	Q05682
Localization	Cytoplasmic
Applications	Immunohistochemistry (FFPE) : 1-2ug/ml for 30 min at RT Western Blot : 1-2ug/ml
Limitations	This recombinant Caldesmon antibody is available for research use only.



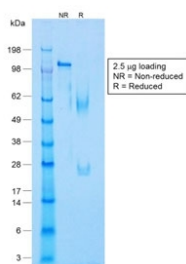
Western blot testing of human ovary tissue lysate using recombinant Caldesmon antibody (clone CALD1/1424R). Predicted molecular weight ~93 kDa, can be observed at 70-80 kDa (non muscle tissue) and 120-150 kDa (smooth muscle).



IHC testing of FFPE human uterus with recombinant Caldesmon antibody (clone CALD1/1424R). Required HIER: boil tissue sections in 1mM EDTA, pH9, for 10-20 min.



IHC testing of FFPE rat uterus with recombinant Caldesmon antibody (clone CALD1/1424R). Required HIER: boil tissue sections in 1mM EDTA, pH9, for 10-20 min.



SDS-PAGE analysis of purified, BSA-free recombinant Caldesmon antibody (clone CALD1/1424R) as confirmation of integrity and purity.

Description

Caldesmon (CAD, CALD, CALD1) is an actin- and myosin-binding protein implicated in the regulation of actomyosin interactions in smooth muscle and nonmuscle cells (could act as a bridge between myosin and actin filaments). [UniProt]

Application Notes

Titering of the recombinant Caldesmon antibody may be required for optimal performance.

1. The prediluted format is supplied in a dropper bottle and is optimized for use in IHC. After epitope retrieval step (if required), drip mAb solution onto the tissue section and incubate at RT for 30 min.

Immunogen

A full length human protein was used as the immunogen for the recombinant Caldesmon antibody.

Storage

Store the recombinant Caldesmon antibody at 2-8°C (with azide) or aliquot and store at -20°C or colder (without azide).

