

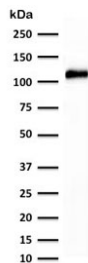
Recombinant Cadherin 16 Antibody / Rabbit Monoclonal [clone KSCP2-2R] (V3724)

Catalog No.	Formulation	Size
V3724-100UG	0.2 mg/ml in 1X PBS with 0.1 mg/ml BSA (US sourced) and 0.05% sodium azide	100 ug
V3724-20UG	0.2 mg/ml in 1X PBS with 0.1 mg/ml BSA (US sourced) and 0.05% sodium azide	20 ug
V3724SAF-100UG	1 mg/ml in 1X PBS; BSA free, sodium azide free	100 ug
V3724IHC-7ML	Prediluted in 1X PBS with 0.1 mg/ml BSA (US sourced) and 0.05% sodium azide; *For IHC use only*	7 ml

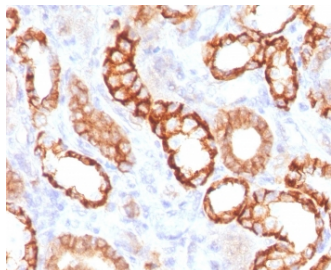
Recombinant **RABBIT MONOCLONAL**

[Bulk quote request](#)

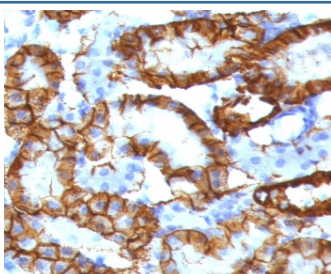
Availability	1-3 business days
Species Reactivity	Human, Mouse
Format	Purified
Host	Rabbit
Clonality	Recombinant Rabbit Monoclonal
Isotype	Rabbit IgG, kappa
Clone Name	KSCP2-2R
Purity	Protein A affinity chromatography
UniProt	O75309
Localization	Cell surface with some cytoplasmic
Applications	Western Blot : 1-2ug/ml Immunohistochemistry (FFPE) : 1-2ug/ml for 30 min at RT Prediluted IHC Only Format : incubate for 30 min at RT (1)
Limitations	This recombinant Cadherin 16 antibody is available for research use only.



Western blot testing of human kidney lysate with recombinant Cadherin 16 antibody (clone KSCP2-2R). Expected molecular weight: 90~130 kDa.



IHC testing of FFPE human renal cell carcinoma with recombinant Cadherin 16 antibody (clone KSCP2-2R). Required HIER: steam sections in 10mM Tris with 1mM EDTA, pH9, for 10-20 min.



IHC testing of FFPE mouse kidney tissue with recombinant Cadherin 16 antibody (clone KSCP2-2R). Required HIER: steam sections in 10mM Tris with 1mM EDTA, pH9, for 10-20 min.

Description

The CDH16 gene is a member of the cadherin superfamily, genes encoding calcium-dependent, membrane-associated glycoproteins. Mapped to a previously identified cluster of cadherin genes on chromosome 16q22.1, the gene localizes with superfamily members CDH1, CDH3, CDH5, CDH8 and CDH11. Cadherin 16 consists of an extracellular domain containing 6 cadherin domains, a transmembrane region and a truncated cytoplasmic domain but lacks the prosequence and tripeptide HAV adhesion recognition sequence typical of most classical cadherins. Expression is exclusively in kidney, where the protein functions as the principal mediator of homotypic cellular recognition, playing a role in the morphogenic direction of tissue development. [Wiki]

Application Notes

The stated application concentrations are suggested starting points. Titration of the recombinant Cadherin 16 antibody may be required due to differences in protocols and secondary/substrate sensitivity.

1. The prediluted format is supplied in a dropper bottle and is optimized for use in IHC. After epitope retrieval step (if required), drip mAb solution onto the tissue section and incubate at RT for 30 min.

Immunogen

Human protein was used as the immunogen for the recombinant Cadherin 16 antibody.

Storage

Store the recombinant Cadherin 16 antibody at 2-8°C (with azide) or aliquot and store at -20°C or colder (without azide).

