

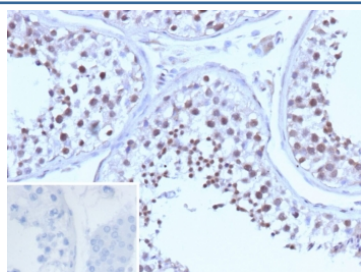
## Recombinant BRCA1 Antibody [clone BRCA1/13502R] (V5798)

Catalog No.	Formulation	Size
V5798-100UG	0.2 mg/ml in 1X PBS with 0.1 mg/ml BSA (US sourced), 0.05% sodium azide	100 ug
V5798-20UG	0.2 mg/ml in 1X PBS with 0.1 mg/ml BSA (US sourced), 0.05% sodium azide	20 ug
V5798SAF-100UG	1 mg/ml in 1X PBS; BSA free, sodium azide free	100 ug

Recombinant **RABBIT MONOCLONAL**

[Bulk quote request](#)

<b>Availability</b>	1-3 business days
<b>Species Reactivity</b>	Human
<b>Format</b>	Purified
<b>Clonality</b>	Recombinant Rabbit Monoclonal
<b>Isotype</b>	Rabbit IgG, kappa
<b>Clone Name</b>	BRCA1/13502R
<b>Purity</b>	Protein A affinity
<b>UniProt</b>	P38398
<b>Localization</b>	Chromosome, Cytoplasm, Nucleus
<b>Applications</b>	Immunohistochemistry (FFPE) : 1-2ug/ml
<b>Limitations</b>	This recombinant BRCA1 antibody is available for research use only.



IHC staining of FFPE human testis tissue with recombinant BRCA1 antibody (clone BRCA1/13502R). Inset: PBS used in place of primary Ab (secondary Ab negative control). HIER: boil tissue sections in pH 9 10mM Tris with 1mM EDTA for 20 min and allow to cool before testing.

### Description

This gene encodes a nuclear phosphoprotein that plays a role in maintaining genomic stability, and it also acts as a tumor suppressor. The encoded protein combines with other tumor suppressors, DNA damage sensors, and signal transducers to form a large multi-subunit protein complex known as the BRCA1-associated genome surveillance complex (BASC). This gene product associates with RNA polymerase II, and through the C-terminal domain, also interacts with histone

deacetylase complexes. This protein thus plays a role in transcription, DNA repair of double-stranded breaks, and recombination. Mutations in this gene are responsible for approximately 40% of inherited breast cancers and more than 80% of inherited breast and ovarian cancers. Alternative splicing plays a role in modulating the subcellular localization and physiological function of this gene.

## **Application Notes**

Optimal dilution of the recombinant BRCA1 antibody should be determined by the researcher.

## **Immunogen**

A recombinant fragment corresponding to the N-terminal region of human BRCA1 protein was used as the immunogen for the recombinant BRCA1 antibody.

## **Storage**

Aliquot the recombinant BRCA1 antibody and store frozen at -20oC or colder. Avoid repeated freeze-thaw cycles.