

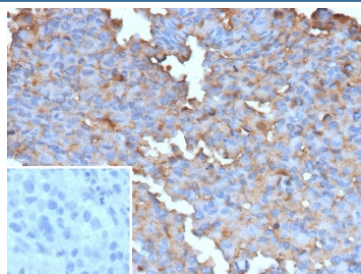
## Recombinant BRAF V600E Antibody [clone BRAF-V600E/13276R] (V5799)

Catalog No.	Formulation	Size
V5799-100UG	0.2 mg/ml in 1X PBS with 0.1 mg/ml BSA (US sourced), 0.05% sodium azide	100 ug
V5799-20UG	0.2 mg/ml in 1X PBS with 0.1 mg/ml BSA (US sourced), 0.05% sodium azide	20 ug
V5799SAF-100UG	1 mg/ml in 1X PBS; BSA free, sodium azide free	100 ug

Recombinant **RABBIT MONOCLONAL**

[Bulk quote request](#)

Availability	1-3 business days
Species Reactivity	Human
Format	Purified
Host	Rabbit
Clonality	Recombinant Rabbit Monoclonal
Isotype	Rabbit IgG, kappa
Clone Name	BRAF-V600E/13276R
Purity	Protein A affinity
UniProt	P15056
Localization	Cytoplasm
Applications	Immunohistochemistry (FFPE) : 1-2ug/ml
Limitations	This recombinant BRAF V600E antibody is available for research use only.



IHC staining of FFPE human melanoma tissue with recombinant BRAF V600E antibody (clone BRAF-V600E/13276R). Inset: PBS used in place of primary Ab (secondary Ab negative control). HIER: boil tissue sections in pH 9 10mM Tris with 1mM EDTA for 20 min and allow to cool before testing.

### Description

The BRAF gene encodes a protein that is part of the RAS-RAF-MEK-ERK signaling pathway, which regulates cell division and proliferation. The V600E mutation in the BRAF gene leads to the production of a constitutively active BRAF protein,

resulting in uncontrolled cell growth and division. Identifying the presence of this mutation is crucial for diagnosing and guiding the treatment of certain cancers. The BRAF (V600E) antibody is used in immunohistochemistry to detect the presence of a specific mutation in the BRAF gene known as V600E. This mutation is commonly associated with various cancers, including melanoma, colorectal cancer, and certain types of thyroid cancer, lung cancer, and Hairy cell leukemia. The BRAF (V600E) antibody specifically binds to the mutated BRAF protein, allowing pathologists to detect the mutation in cancer tissue. Immunohistochemistry using this antibody is often employed in the evaluation of tumor specimens to aid in the diagnosis and classification of cancers.

## Application Notes

Optimal dilution of the recombinant BRAF V600E antibody should be determined by the researcher.

## Immunogen

A recombinant fragment specific to human BRAF V600E mutant protein was used as the immunogen for the recombinant BRAF V600E antibody.

## Storage

Aliquot the recombinant BRAF V600E antibody and store frozen at -20oC or colder. Avoid repeated freeze-thaw cycles.