

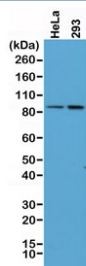
Recombinant Beta Catenin Antibody [clone RM276] (R20293)

Catalog No.	Formulation	Size
R20293-0.1ML	Antibody in PBS with 50% glycerol, 1% BSA and 0.09% sodium azide	100 ul

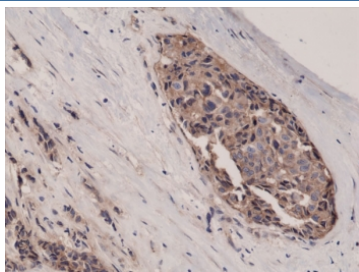
Recombinant **RABBIT MONOCLONAL**

[Bulk quote request](#)

Availability	1-3 business days
Species Reactivity	Human
Predicted Reactivity	Mouse, Rat
Format	Purified
Host	Rabbit
Clonality	Recombinant Rabbit Monoclonal
Isotype	Rabbit IgG
Clone Name	RM276
Purity	Protein A purified from animal origin-free supernatant
UniProt	P35222
Gene ID	1499
Applications	Immunohistochemistry (FFPE) : 1:500-1:1000 (1) Western Blot : 1:400-1:1000
Limitations	This recombinant Beta Catenin antibody is available for research use only.



Western blot of human HeLa and 293 cell lysate using recombinant Beta Catenin antibody at 1:400. Predicted molecular weight ~85 kDa, but routinely observed at 90-95 kDa.



IHC testing of FFPE human breast cancer tissue with recombinant Beta Catenin antibody at 1:1000.

Description

This recombinant Beta Catenin antibody reacts to human Beta-Catenin (Catenin beta-1) and may also react to mouse or rat Beta-Catenin, as predicted by immunogen homology.

Application Notes

The stated application concentrations are suggested starting points. Titration of the recombinant Beta Catenin antibody may be required due to differences in protocols and secondary/substrate sensitivity.

1. A pH6 Citrate buffer or pH9 Tris/EDTA buffer HIER step is recommended for testing of FFPE tissue sections.

Immunogen

A peptide corresponding to human Beta-Catenin was used as the immunogen for this recombinant Beta Catenin antibody.

Storage

Store the recombinant Beta Catenin antibody at -20oC (with glycerol) or aliquot and store at -20oC (without glycerol).