

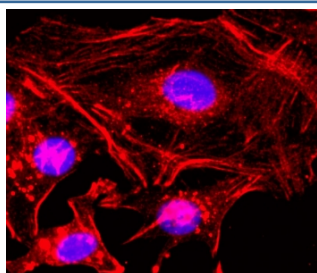
Recombinant Beta Actin Antibody (Biotin Conjugate) [clone RM112] (R20197BTN)

Catalog No.	Formulation	Size
R20197BTN-50UL	Antibody in PBS with 50% glycerol, 1% BSA and 0.09% sodium azide	50 ul

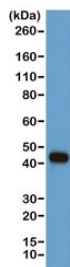
Recombinant **RABBIT MONOCLONAL**

[Bulk quote request](#)

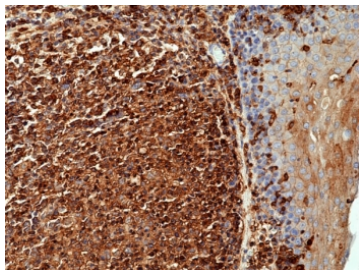
Availability	1-3 business days
Species Reactivity	All Species
Format	Biotin Conjugate
Clonality	Recombinant Rabbit Monoclonal
Isotype	Rabbit IgG
Clone Name	RM112
Purity	Protein A purified from animal origin-free supernatant
UniProt	P60709
Gene ID	60
Applications	Western Blot : 1:1000 Immunoprecipitation : 1:200 Chromatin IP (ChIP) : 1:200 Immunocytochemistry : 1:200 Immunohistochemistry : 1:200-1:1000
Limitations	This recombinant Beta Actin antibody is available for research use only.



ICC staining of human HeLa cells using the recombinant Beta Actin antibody at 1:200 (red) and DAPI to stain the nuclei (blue).



Western blot of human A431 cells using the recombinant Beta Actin antibody at a 1:1000. Predicted molecular weight ~42 kDa.



IHC staining of FFPE human tonsil with recombinant Beta Actin antibody at 1:1000 (clone RM112). HIER: boil tissue sections in pH 6 citrate buffer or pH 9 10mM Tris with 1mM EDTA for 20 min and allow to cool before testing.

Description

This recombinant Beta Actin antibody reacts to b-Actin (ACTB/Actin, cytoplasmic 1). No cross reactivity with other isoforms of Actin.

Application Notes

The stated application concentrations are suggested starting points. Titration of the recombinant Beta Actin antibody may be required due to differences in protocols and secondary/substrate sensitivity.

Immunogen

A peptide corresponding to the N-terminus of b-Actin was used as the immunogen for this recombinant Beta Actin antibody.

Storage

Store the recombinant Beta Actin antibody at -20oC.