

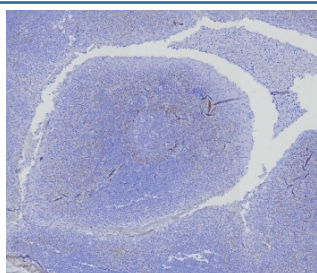
Recombinant BCMA Antibody [clone CD269/8276R] (V4412)

Catalog No.	Formulation	Size
V4412-100UG	0.2 mg/ml in 1X PBS with 0.1 mg/ml BSA (US sourced), 0.05% sodium azide	100 ug
V4412-20UG	0.2 mg/ml in 1X PBS with 0.1 mg/ml BSA (US sourced), 0.05% sodium azide	20 ug
V4412SAF-100UG	1 mg/ml in 1X PBS; BSA free, sodium azide free	100 ug

Recombinant **RABBIT MONOCLONAL**

[Bulk quote request](#)

Availability	1-3 business days
Species Reactivity	Human
Format	Purified
Host	Rabbit
Clonality	Recombinant Rabbit Monoclonal
Isotype	Rabbit IgG, kappa
Clone Name	CD269/8276R
Purity	Protein A/G affinity
UniProt	Q02223
Localization	Cell surface
Applications	ELISA (Order BSA-free Format For Coating) : Immunohistochemistry (FFPE) : 1-2ug/ml for 30 minutes at RT
Limitations	This recombinant BCMA antibody is available for research use only.



IHC staining of FFPE human tonsil tissue with recombinant BCMA antibody (clone CD269/8276R). HIER: boil tissue sections in pH 9 10mM Tris with 1mM EDTA for 20 min and allow to cool before testing.

Description

The B cell maturation protein (BCMA) is a type I integral membrane protein that belongs to the tumor necrosis factor

receptor (TNF-R) superfamily. It is expressed as a 184 amino acid peptide that is expressed only in mature B-lymphocytes and is located on the cis part of the Golgi apparatus. BCMA shares significant homology with TACI (transmembrane activator) within the cysteine-rich domain. TACI has been shown to bind CAML, which induces activation of NFAT (nuclear factor of activated T cells). Both BCMA and TACI have been shown to bind APRIL and TALL-1, which stimulate B cell proliferation in conjunction with other B-cell activators. When overexpressed, TALL-1 stimulates the development of systemic lupus erythaematosus (SLE).

Application Notes

Optimal dilution of the recombinant BCMA antibody should be determined by the researcher.

Immunogen

A recombinant human protein fragment (within amino acids 1-184) was used as the immunogen for the recombinant BCMA antibody.

Storage

Aliquot the recombinant BCMA antibody and store frozen at -20oC or colder. Avoid repeated freeze-thaw cycles.