

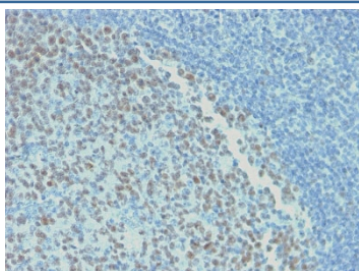
Recombinant Bcl6 Antibody [clone rBCL6/1718] (V7340)

Catalog No.	Formulation	Size
V7340-100UG	0.2 mg/ml in 1X PBS with 0.1 mg/ml BSA (US sourced) and 0.05% sodium azide	100 ug
V7340-20UG	0.2 mg/ml in 1X PBS with 0.1 mg/ml BSA (US sourced) and 0.05% sodium azide	20 ug
V7340SAF-100UG	1 mg/ml in 1X PBS; BSA free, sodium azide free	100 ug
V7340IHC-7ML	Prediluted in 1X PBS with 0.1 mg/ml BSA (US sourced) and 0.05% sodium azide; *For IHC use only*	7 ml

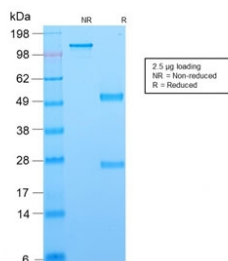
Recombinant **MOUSE MONOCLONAL**

[Bulk quote request](#)

Availability	1-3 business days
Species Reactivity	Human
Format	Purified
Clonality	Recombinant Mouse Monoclonal
Isotype	Mouse IgG1, kappa
Clone Name	rBCL6/1718
Purity	Protein G affinity chromatography
UniProt	P41182
Localization	Nuclear
Applications	Immunohistochemistry (FFPE) : 1-2ug/ml for 30 min at RT
Limitations	This recombinant Bcl6 antibody is available for research use only.



IHC testing of FFPE human tonsil with recombinant Bcl6 antibody (clone rBCL6/1718).
Required HIER: boil tissue sections in 10mM citrate buffer, pH 6, for 10-20 min.



SDS-PAGE analysis of purified, BSA-free recombinant Bcl6 antibody (clone rBCL6/1718) as confirmation of integrity and purity.

Description

Antibody to Bcl-6 is helpful in a number of diagnostic settings: First, in the differential diagnosis of small B-cell lymphoma. Follicular lymphoma will show Bcl-6 (and CD10) positivity whereas other small B-cell lymphomas are usually negative. Second, Bcl-6 is an important prognostic marker in diffuse large B-cell lymphomas (DLBCL), where CD10, Bcl-6 and MUM1/IRF4 are used to identify germinal center and activated B-cell phenotypes. Third, Bcl-6 can be valuable in distinguishing classical Hodgkin lymphoma from nodular lymphocyte predominant Hodgkin lymphoma (NLPHL). The Reed-Sternberg cells of classical Hodgkin lymphoma are bcl-6 negative whereas the large (L&H) cells of NLPHL are bcl-6 positive. In contrast, anti-Bcl-6 rarely stains mantle-cell lymphoma and MALT lymphoma.

Application Notes

Optimal dilution of the recombinant Bcl6 antibody should be determined by the researcher.

1. The prediluted format is supplied in a dropper bottle and is optimized for use in IHC. After epitope retrieval step (if required), drip mAb solution onto the tissue section and incubate at RT for 30 min.

Immunogen

Amino acids 256-389 were used as the immunogen for the recombinant Bcl6 antibody.

Storage

Store the recombinant Bcl6 antibody at 2-8°C (with azide) or aliquot and store at -20°C or colder (without azide).