

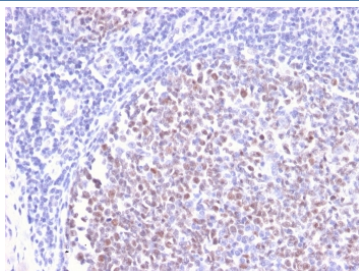
## Recombinant Bcl6 Antibody [clone BCL6/2497R] (V8064)

Catalog No.	Formulation	Size
V8064-100UG	0.2 mg/ml in 1X PBS with 0.1 mg/ml BSA (US sourced) and 0.05% sodium azide	100 ug
V8064-20UG	0.2 mg/ml in 1X PBS with 0.1 mg/ml BSA (US sourced) and 0.05% sodium azide	20 ug
V8064SAF-100UG	1 mg/ml in 1X PBS; BSA free, sodium azide free	100 ug

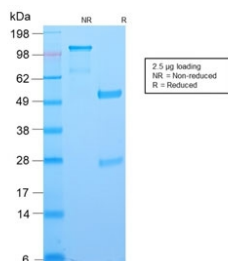
Recombinant **RABBIT MONOCLONAL**

[Bulk quote request](#)

Availability	1-3 business days
Species Reactivity	Human
Format	Purified
Host	Rabbit
Clonality	Recombinant Rabbit Monoclonal
Isotype	Rabbit IgG, kappa
Clone Name	BCL6/2497R
Purity	Protein A affinity chromatography
UniProt	P41182
Localization	Nuclear
Applications	Immunohistochemistry (FFPE) : 1-2ug/ml
Limitations	This recombinant Bcl6 antibody is available for research use only.



IHC staining of FFPE human tonsil with recombinant Bcl6 antibody (clone BCL6/2497R).  
HIER: boil tissue sections in pH 9 10mM Tris with 1mM EDTA for 20 min and allow to cool before testing.



SDS-PAGE analysis of purified, BSA-free recombinant Bcl6 antibody (clone BCL6/2497R) as confirmation of integrity and purity.

## Description

Recognizes a protein of 95kDa, which is identified as Bcl-6. Antibody to bcl-6 is helpful in a number of diagnostic settings: (1) In the differential diagnosis of small B-cell lymphoma. Follicular lymphoma will show bcl-6 (and CD10) positivity whereas other small B-cell lymphomas are usually negative. (2) Bcl-6 is an important prognostic marker in diffuse large B-cell lymphomas (DLBCL), where CD10, bcl-6 and MUM1/IRF4 are used to identify germinal center and activated B-cell phenotypes. (3) Bcl-6 can be valuable in distinguishing classical Hodgkin lymphoma from nodular lymphocyte predominant Hodgkin lymphoma (NLPHL). The Reed-Sternberg cells of classical Hodgkin lymphoma are bcl-6 negative whereas the large ('LH') cells of NLPHL are bcl-6 positive. In contrast, anti-Bcl-6 rarely stains mantle-cell lymphoma and MALT lymphoma.

## Application Notes

Optimal dilution of the recombinant Bcl6 antibody should be determined by the researcher.

## Immunogen

A recombinant human partial protein (amino acids 256-389) was used as the immunogen for this recombinant Bcl6 antibody.

## Storage

Store the recombinant Bcl6 antibody at 2-8oC (with azide) or aliquot and store at -20oC or colder (without azide).