

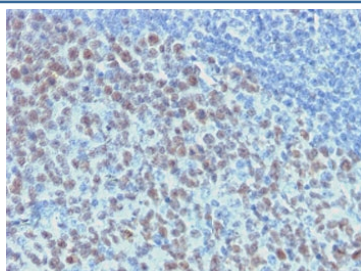
Recombinant Bcl6 Antibody [clone ARBC6-2R] (V7350)

Catalog No.	Formulation	Size
V7350-100UG	0.2 mg/ml in 1X PBS with 0.1 mg/ml BSA (US sourced) and 0.05% sodium azide	100 ug
V7350-20UG	0.2 mg/ml in 1X PBS with 0.1 mg/ml BSA (US sourced) and 0.05% sodium azide	20 ug
V7350SAF-100UG	1 mg/ml in 1X PBS; BSA free, sodium azide free	100 ug
V7350IHC-7ML	Prediluted in 1X PBS with 0.1 mg/ml BSA (US sourced) and 0.05% sodium azide; *For IHC use only*	7 ml

Recombinant **MOUSE MONOCLONAL**

[Bulk quote request](#)

Availability	1-3 business days
Species Reactivity	Human
Format	Purified
Clonality	Recombinant Mouse Monoclonal
Isotype	Mouse IgG1, kappa
Clone Name	ARBC6-2R
Purity	Protein G affinity chromatography
UniProt	P41182
Localization	Nuclear
Applications	Immunohistochemistry (FFPE) : 1-2ug/ml Prediluted IHC Only Format : incubate for 30 min at RT (1)
Limitations	This recombinant Bcl6 antibody is available for research use only.



IHC testing of FFPE human tonsil with recombinant Bcl6 antibody (clone ARBC6-2R).
Required HIER: boil tissue sections in 10mM citrate buffer, pH 6, for 10-20 min.

Description

Bcl6 is a transcriptional repressor mainly required for germinal center (GC) formation and antibody affinity maturation which has different mechanisms of action specific to the lineage and biological functions. Forms complexes with different corepressors and histone deacetylases to repress the transcriptional expression of different subsets of target genes. Represses its target genes by binding directly to the DNA sequence 5'-TTCCTAGAA-3' (BCL6-binding site) or indirectly by repressing the transcriptional activity of transcription factors. In GC B-cells, represses genes that function in differentiation, inflammation, apoptosis and cell cycle control, also autoregulates its transcriptional expression and up-regulates, indirectly, the expression of some genes important for GC reactions, such as AICDA, through the repression of microRNAs expression, like miR155. [UniProt]

Application Notes

Optimal dilution of the recombinant Bcl6 antibody should be determined by the researcher.

1. The prediluted format is supplied in a dropper bottle and is optimized for use in IHC. After epitope retrieval step (if required), drip mAb solution onto the tissue section and incubate at RT for 30 min.

Immunogen

Amino acids 256-389 were used as the immunogen for the recombinant Bcl6 antibody.

Storage

Store the recombinant Bcl6 antibody at 2-8oC (with azide) or aliquot and store at -20oC or colder (without azide).