

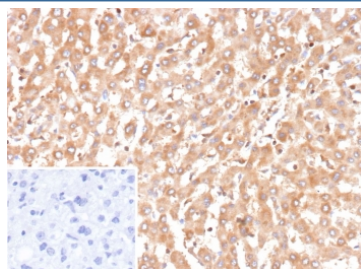
Recombinant BCL2L4 Antibody / BAX [clone BAX/9925R] (V5784)

Catalog No.	Formulation	Size
V5784-100UG	0.2 mg/ml in 1X PBS with 0.1 mg/ml BSA (US sourced), 0.05% sodium azide	100 ug
V5784-20UG	0.2 mg/ml in 1X PBS with 0.1 mg/ml BSA (US sourced), 0.05% sodium azide	20 ug
V5784SAF-100UG	1 mg/ml in 1X PBS; BSA free, sodium azide free	100 ug

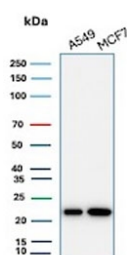
Recombinant **RABBIT MONOCLONAL**

[Bulk quote request](#)

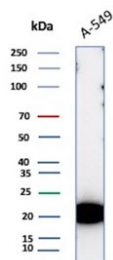
Availability	1-3 business days
Species Reactivity	Human
Format	Purified
Clonality	Recombinant Rabbit Monoclonal
Isotype	Rabbit IgG, kappa
Clone Name	BAX/9925R
UniProt	Q07812
Localization	Cytoplasm
Applications	Immunohistochemistry (FFPE) : 1-2ug/ml Western Blot : 2-4ug/ml
Limitations	This recombinant BCL2L4 antibody is available for research use only.



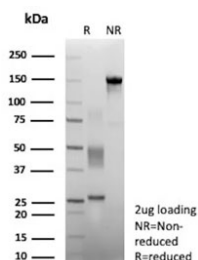
IHC staining of FFPE human liver tissue with recombinant BCL2L4 antibody (clone BAX/9925R). Inset: PBS used in place of primary Ab (secondary Ab negative control).
HIER: boil tissue sections in pH 9 10mM Tris with 1mM EDTA for 20 min and allow to cool before testing.



Western blot testing of human A549 and MCF7 cell lysate with recombinant BCL2L4 antibody (clone BAX/9925R). Predicted molecular weight ~21 kDa.



Western blot testing of human A549 cell lysate with recombinant BCL2L4 antibody (clone BAX/9925R). Predicted molecular weight ~21 kDa.



SDS-PAGE analysis of purified, BSA-free recombinant BCL2L4 antibody (clone BAX/9925R) as confirmation of integrity and purity.

Description

Recognizes a protein of 21 kDa, identified as the Bax protein (also called Bcl-2-like protein 4 or BCL2L4). This MAb is highly specific to BCL2L4 and shows no cross-reaction with Bcl-2 or Bcl-X protein. Bcl-2 blocks cell death following a variety of stimuli. BCL2L4 has extensive amino acid homology with Bcl-2 and it homodimerizes and forms heterodimers with Bcl-2. Overexpression of BCL2L4 accelerates apoptotic death induced by cytokine deprivation in an IL-3 dependent cell line, and BCL2L4 also counters the death repressor activity of Bcl-2.

Application Notes

Optimal dilution of the recombinant BCL2L4 antibody should be determined by the researcher.

Immunogen

A portion of amino acids 1-100 from human BAX protein was used as the immunogen for the recombinant BCL2L4 antibody.

Storage

Aliquot the recombinant BCL2L4 antibody and store frozen at -20°C or colder. Avoid repeated freeze-thaw cycles.