

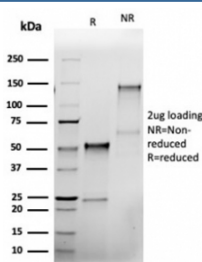
Recombinant BCL2L1 Antibody / Bcl-X [clone rBCL2L1/4508] (V9136)

Catalog No.	Formulation	Size
V9136-100UG	0.2 mg/ml in 1X PBS with 0.1 mg/ml BSA (US sourced), 0.05% sodium azide	100 ug
V9136-20UG	0.2 mg/ml in 1X PBS with 0.1 mg/ml BSA (US sourced), 0.05% sodium azide	20 ug
V9136SAF-100UG	1 mg/ml in 1X PBS; BSA free, sodium azide free	100 ug

Recombinant **MOUSE MONOCLONAL**

[Bulk quote request](#)

Availability	1-3 business days
Species Reactivity	Human
Format	Purified
Host	Mouse
Clonality	Recombinant Mouse Monoclonal
Isotype	Mouse IgG2a, kappa
Clone Name	rBCL2L1/4508
Purity	Protein A/G affinity
UniProt	Q07817
Localization	Cytoplasm, Cell membrane, Nuclear membrane
Applications	Immunohistochemistry (FFPE) : 1-2ug/ml
Limitations	This recombinant BCL2L1 antibody is available for research use only.



SDS-PAGE analysis of purified, BSA-free recombinant BCL2L1 antibody (clone rBCL2L1/4508) as confirmation of integrity and purity.

Description

Recognizes a protein of 27kDa, identified as the Bcl-X protein. This MAb shows no cross-reaction with Bcl-2 or Bax protein. Bcl-X has two isoforms, Bcl-XL (long), a 241-amino acid protein which suppresses cell death. And Bcl-XS (short),

a 178-amino acid protein lacking a 63-amino acid domain which functions as a dominant inhibitor of Bcl-2.

Application Notes

Optimal dilution of the recombinant BCL2L1 antibody should be determined by the researcher.

Immunogen

A portion of amino acids 1-100 was used as the immunogen for the recombinant BCL2L1 antibody.

Storage

Aliquot the recombinant BCL2L1 antibody and store frozen at -20oC or colder. Avoid repeated freeze-thaw cycles.