

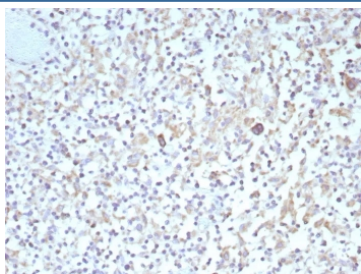
Recombinant Bcl-X Antibody [clone BCL2L1/9221R] (V5590)

Catalog No.	Formulation	Size
V5590-100UG	0.2 mg/ml in 1X PBS with 0.1 mg/ml BSA (US sourced), 0.05% sodium azide	100 ug
V5590-20UG	0.2 mg/ml in 1X PBS with 0.1 mg/ml BSA (US sourced), 0.05% sodium azide	20 ug
V5590SAF-100UG	1 mg/ml in 1X PBS; BSA free, sodium azide free	100 ug

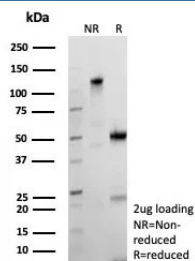
Recombinant **RABBIT MONOCLONAL**

[Bulk quote request](#)

Availability	1-3 business days
Species Reactivity	Human
Format	Purified
Host	Rabbit
Clonality	Recombinant Rabbit Monoclonal
Isotype	Rabbit IgG, kappa
Clone Name	BCL2L1/9221R
Purity	Protein A/G affinity
UniProt	Q07817
Localization	Cytoplasm, Cell membrane, Nuclear membrane
Applications	Immunohistochemistry (FFPE) : 1-2ug/ml
Limitations	This recombinant Bcl-X antibody is available for research use only.



IHC staining of FFPE human Hodgkins lymphoma tissue with recombinant Bcl-X antibody (clone BCL2L1/9221R). HIER: boil tissue sections in pH 9 10mM Tris with 1mM EDTA for 20 min and allow to cool before testing.



SDS-PAGE analysis of purified, BSA-free recombinant Bcl-X antibody (clone BCL2L1/9221R) as confirmation of integrity and purity.

Description

Recognizes a protein of 27kDa, identified as the Bcl-X protein. This MAb shows no cross-reaction with Bcl-2a or Bax protein. Bcl-X has two isoforms, Bcl-XL (long), a 241-amino acid protein which suppresses cell death. And Bcl-XS (short), a 178-amino acid protein lacking a 63-amino acid domain which functions as a dominant inhibitor of Bcl-2.

Application Notes

Optimal dilution of the recombinant Bcl-X antibody should be determined by the researcher.

Immunogen

A recombinant fragment (within amino acids 1-100) of human BCL2L1 protein was used as the immunogen for the recombinant Bcl-X antibody.

Storage

Aliquot the recombinant Bcl-X antibody and store frozen at -20oC or colder. Avoid repeated freeze-thaw cycles.