

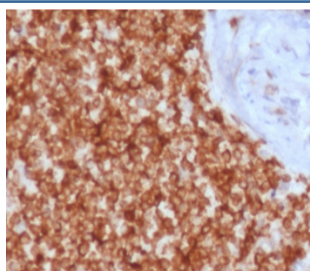
Recombinant Bcl-2 Antibody / Rabbit Monoclonal [clone ARBC2-2R] (V3671)

| Catalog No. | Formulation | Size |
|----------------|--|--------|
| V3671-100UG | 0.2 mg/ml in 1X PBS with 0.1 mg/ml BSA (US sourced) and 0.05% sodium azide | 100 ug |
| V3671-20UG | 0.2 mg/ml in 1X PBS with 0.1 mg/ml BSA (US sourced) and 0.05% sodium azide | 20 ug |
| V3671SAF-100UG | 1 mg/ml in 1X PBS; BSA free, sodium azide free | 100 ug |

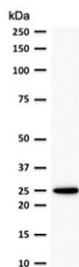
Recombinant **RABBIT MONOCLONAL**

[Bulk quote request](#)

| | |
|--------------------|--|
| Availability | 1-3 business days |
| Species Reactivity | Human |
| Format | Purified |
| Host | Rabbit |
| Clonality | Recombinant Rabbit Monoclonal |
| Isotype | Rabbit IgG, kappa |
| Clone Name | ARBC2-2R |
| Purity | Protein A affinity chromatography |
| UniProt | P10415 |
| Localization | Cytoplasmic, membrane |
| Applications | Western Blot : 1-2ug/ml Immunohistochemistry (FFPE) : 0.5-1ug/ml for 30 min at RT |
| Limitations | This recombinant Bcl-2 antibody is available for research use only. |



IHC testing of FFPE human spleen tissue with recombinant Bcl-2 antibody (clone ARBC2-2R). HIER: boil tissue sections in 1mM EDTA buffer, pH 7.5-8.5, for 10-20 min followed by cooling at RT for 20 min.



Western blot testing of human MCF7 cell lysate with recombinant Bcl2 antibody (clone ARBC2-2R). Expected molecular weight ~26 kDa.

Description

This antibody recognizes a protein of 25-26kDa, identified as the Bcl-2 alpha oncoprotein. It shows no cross-reaction with Bcl-x or Bax protein. Expression of bcl-2 alpha oncoprotein inhibits the programmed cell death (apoptosis). In most follicular lymphomas, neoplastic germinal centers express high levels of bcl-2 alpha protein, whereas the normal or hyperplastic germinal centers are negative. Consequently, this antibody is valuable when distinguishing between reactive and neoplastic follicular proliferation in lymph node biopsies. It may also be used in distinguishing between those follicular lymphomas that express bcl-2 protein and the small number in which the neoplastic cells are bcl-2 negative.

Application Notes

The optimal dilution of the recombinant Bcl-2 antibody for each application should be determined by the researcher.

Immunogen

Recombinant full length human protein was used as the immunogen for this recombinant Bcl-2 antibody.

Storage

Store the recombinant Bcl-2 antibody at 2-8oC (with azide) or aliquot and store at -20oC or colder (without azide).