

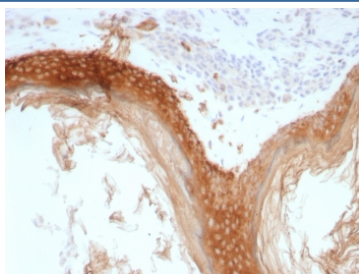
Recombinant Basic Cytokeratin Antibody [clone rKRTH/8883] (V4282)

| Catalog No. | Formulation | Size |
|----------------|---|--------|
| V4282-100UG | 0.2 mg/ml in 1X PBS with 0.1 mg/ml BSA (US sourced), 0.05% sodium azide | 100 ug |
| V4282-20UG | 0.2 mg/ml in 1X PBS with 0.1 mg/ml BSA (US sourced), 0.05% sodium azide | 20 ug |
| V4282SAF-100UG | 1 mg/ml in 1X PBS; BSA free, sodium azide free | 100 ug |

Recombinant **MOUSE MONOCLONAL**

[Bulk quote request](#)

| | |
|--------------------|---|
| Availability | 1-3 business days |
| Species Reactivity | Human |
| Format | Purified |
| Host | Mouse |
| Clonality | Recombinant Mouse Monoclonal |
| Isotype | Mouse IgG2b, kappa |
| Clone Name | rKRTH/8883 |
| Purity | Protein A/G affinity |
| UniProt | Q01546 |
| Localization | Cytoplasm |
| Applications | Immunohistochemistry (FFPE) : 1-2ug/ml for 30 minutes at RT |
| Limitations | This recombinant Basic Cytokeratin antibody is available for research use only. |



IHC staining of FFPE human skin tissue with recombinant Basic Cytokeratin antibody (clone rKRTH/8883). HIER: boil tissue sections in pH 9 10mM Tris with 1mM EDTA for 20 min and allow to cool before testing.

Description

This mAb recognizes basic (Type II or HMW) cytokeratins, which include 67kDa (CK1); 64kDa (CK3); 59kDa (CK4); 58kDa (CK5); 56kDa (CK6); 52kDa (CK8). Twenty human keratins are resolved with two-dimensional gel electrophoresis

into acidic (pI 6.0) subfamilies. The acidic keratins have molecular weights (MW) of 56.5, 55, 51, 50, 5048, 46, 45, and 40kDa. mAb AE3 recognizes the 65-67, 64, 59, 58, 56, and 52kDa keratins of basic subfamily. Many studies have shown the usefulness of keratins as markers in cancer research and tumor diagnosis.

Application Notes

Optimal dilution of the recombinant Basic Cytokeratin antibody should be determined by the researcher.

Immunogen

Recombinant full-length human KRT76 protein was used as the immunogen for the recombinant Basic Cytokeratin antibody.

Storage

Aliquot the recombinant Basic Cytokeratin antibody and store frozen at -20oC or colder. Avoid repeated freeze-thaw cycles.