

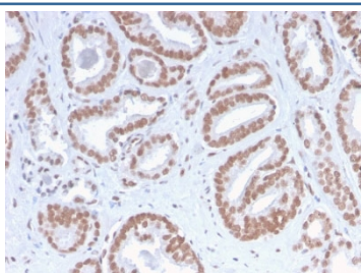
Recombinant ATRX Antibody / RAD54 [clone ATRX/2900R] (V7325)

Catalog No.	Formulation	Size
V7325-100UG	0.2 mg/ml in 1X PBS with 0.1 mg/ml BSA (US sourced) and 0.05% sodium azide	100 ug
V7325-20UG	0.2 mg/ml in 1X PBS with 0.1 mg/ml BSA (US sourced) and 0.05% sodium azide	20 ug
V7325SAF-100UG	1 mg/ml in 1X PBS; BSA free, sodium azide free	100 ug
V7325IHC-7ML	Prediluted in 1X PBS with 0.1 mg/ml BSA (US sourced) and 0.05% sodium azide; *For IHC use only*	7 ml

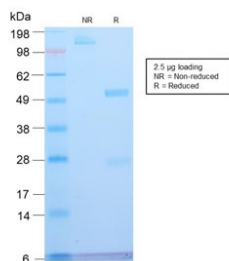
Recombinant **RABBIT MONOCLONAL**

[Bulk quote request](#)

Species Reactivity	Human
Format	Purified
Host	Rabbit
Clonality	Recombinant Rabbit Monoclonal
Isotype	Rabbit IgG, kappa
Clone Name	ATRX/2900R
Purity	Protein A affinity chromatography
UniProt	P46100
Localization	Nuclear
Applications	Immunohistochemistry (FFPE) : 1-2ug/ml for 30 min at RT
Limitations	This recombinant ATRX antibody is available for research use only.



IHC staining of FFPE human prostate carcinoma with recombinant ATRX antibody. HIER: boil tissue sections in 10mM Tris with 1mM EDTA buffer, pH 9, for 10-20 min followed by cooling at RT for 20 min.



SDS-PAGE analysis of purified, BSA-free recombinant ATRX antibody (clone ATRX/2900R) as confirmation of integrity and purity.

Description

ATRX is a member of the Snf2 family of helicase/ATPases, which contribute to the remodeling of the nucleosome structure in an ATP-dependent manner, and facilitate the initiation of transcription and replication. Structurally, it contains a PHD zinc finger motif. ATRX is regulated throughout the cell cycle where it is differentially distributed within the nucleus. During interphase, it predominately associates with the nuclear matrix, while during mitosis, ATRX localizes with condensed chromatin. At the onset of M phase, phosphorylation rapidly induces this redistribution of ATRX to the short arms of human acrocentric chromosomes, where it then specifically complexes with heterochromatin protein 1 \pm to mediate chromosomal segregation. Mutations in the gene correlate with a high incidence of severe X-linked form of syndromal mental retardation associated with alpha-thalassemia or ATRX syndrome.

Application Notes

The concentration stated for each application is a general starting point. Variations in protocols, secondaries and substrates may require the recombinant ATRX antibody to be titrated up or down for optimal performance.

1. The prediluted format is supplied in a dropper bottle and is optimized for use in IHC. After epitope retrieval step (if required), drip mAb solution onto the tissue section and incubate at RT for 30 min.

Immunogen

Recombinant human ATRX protein was used as the immunogen for this recombinant ATRX antibody.

Storage

Store the recombinant ATRX antibody at 2-8°C (with azide) or aliquot and store at -20°C or colder (without azide).