

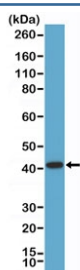
Recombinant AMACR Antibody / Alpha-methylacyl-CoA racemase [clone RM349] (R20371)

Catalog No.	Formulation	Size
R20371-0.1ML	Antibody in PBS with 50% glycerol, 1% BSA and 0.09% sodium azide	100 ul

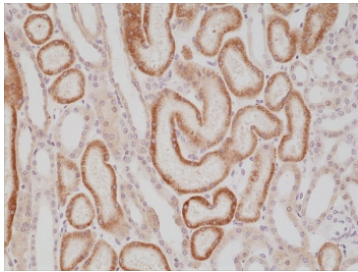
Recombinant **RABBIT MONOCLONAL**

[Bulk quote request](#)

Availability	1-3 business days
Species Reactivity	Human
Format	Purified
Host	Rabbit
Clonality	Recombinant Rabbit Monoclonal
Isotype	Rabbit IgG
Clone Name	RM349
Purity	Protein A purified from animal origin-free supernatant
UniProt	Q9UHK6
Localization	Cytoplasmic
Applications	Immunohistochemistry (FFPE) : 1:500-1:1000 Western Blot : 1:1000-1:2000
Limitations	This recombinant AMACR antibody is available for research use only.



Western blot testing of human LNCaP cell lysate with recombinant AMACR antibody at 1:1000 dilution. Predicted molecular weight ~43 kDa.



IHC staining of FFPE human kidney tissue with recombinant AMACR antibody at 1:1000.

Description

This antibody reacts to human p504s/AMACR/Alpha-methylacyl-CoA racemase.

Application Notes

The stated application concentrations are suggested starting points. Titration of the recombinant AMACR antibody may be required due to differences in protocols and secondary/substrate sensitivity.

Immunogen

A peptide corresponding to residues in human p504s/AMACR was used as the immunogen for the AMACR antibody.

Storage

Store the recombinant AMACR antibody at -20oC.