

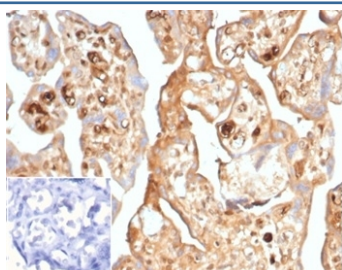
Recombinant Alpha Fetoprotein Antibody / AFP [clone AFP/7007R] (V9488)

Catalog No.	Formulation	Size
V9488-100UG	0.2 mg/ml in 1X PBS with 0.1 mg/ml BSA (US sourced), 0.05% sodium azide	100 ug
V9488-20UG	0.2 mg/ml in 1X PBS with 0.1 mg/ml BSA (US sourced), 0.05% sodium azide	20 ug
V9488SAF-100UG	1 mg/ml in 1X PBS; BSA free, sodium azide free	100 ug

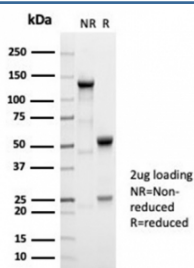
Recombinant **RABBIT MONOCLONAL**

[Bulk quote request](#)

Availability	1-3 business days
Species Reactivity	Human
Format	Purified
Clonality	Recombinant Rabbit Monoclonal
Isotype	Rabbit IgG, kappa
Clone Name	AFP/7007R
Purity	Protein A/G affinity
UniProt	P02771
Localization	Cytoplasm
Applications	Immunohistochemistry (FFPE) : 1-2ug/ml
Limitations	This recombinant Alpha Fetoprotein antibody is available for research use only.



IHC staining of FFPE human placental tissue with recombinant Alpha Fetoprotein antibody (clone AFP/7007R) at 2ug/ml in PBS for 30min RT. Cytoplasmic staining observed. Negative control inset: PBS used instead of primary antibody to control for secondary Ab binding. HIER: boil tissue sections in pH 9 10mM Tris with 1mM EDTA for 20 min and allow to cool before testing.



SDS-PAGE analysis of purified, BSA-free recombinant Alpha Fetoprotein antibody (clone AFP/7007R) as confirmation of integrity and purity.

Description

It recognizes an oncofetal glycoprotein with a single chain of 70kDa, which is identified as alpha fetoprotein (AFP). This MAbs is highly specific to AFP and shows no cross-reaction with other oncofetal antigens or serum albumin. The yolk sac and the liver produce AFP during fetal life. AFP expression in adults is often associated with hepatoma or teratoma. However, hereditary persistence of alpha-fetoprotein may also be found in individuals with no obvious pathology. The protein is thought to be the fetal counterpart of serum albumin, and the AFP and albumin genes are present in tandem in the same transcriptional orientation on chromosome 4. AFP is found in monomeric as well as dimeric and trimeric forms, and binds copper, nickel, fatty acids and bilirubin. The level of AFP in amniotic fluid is used to measure renal loss of protein to screen for spinal bifida and anencephaly.

Application Notes

Optimal dilution of the recombinant Alpha Fetoprotein antibody should be determined by the researcher.

Immunogen

Recombinant human full-length AFP protein was used as the immunogen for the recombinant Alpha Fetoprotein antibody.

Storage

Aliquot the recombinant Alpha Fetoprotein antibody and store frozen at -20oC or colder. Avoid repeated freeze-thaw cycles.