

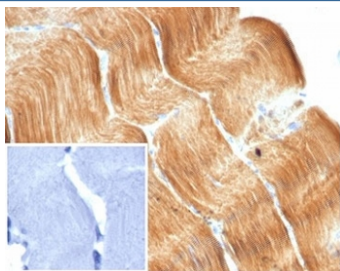
Recombinant Alpha Actinin 2 Antibody / ACTN2 / Sarcomeric Alpha Actinin [clone ACTN2/7040R] (V9432)

Catalog No.	Formulation	Size
V9432-100UG	0.2 mg/ml in 1X PBS with 0.1 mg/ml BSA (US sourced), 0.05% sodium azide	100 ug
V9432-20UG	0.2 mg/ml in 1X PBS with 0.1 mg/ml BSA (US sourced), 0.05% sodium azide	20 ug
V9432SAF-100UG	1 mg/ml in 1X PBS; BSA free, sodium azide free	100 ug

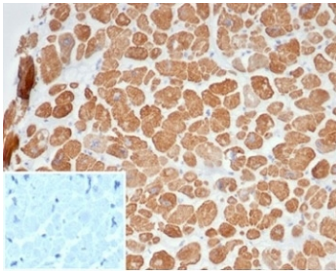
Recombinant **RABBIT MONOCLONAL**

[Bulk quote request](#)

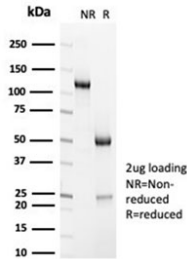
Availability	1-3 business days
Species Reactivity	Human
Format	Purified
Clonality	Recombinant Rabbit Monoclonal
Isotype	Rabbit IgG, kappa
Clone Name	ACTN2/7040R
Purity	Protein A/G affinity
UniProt	P35609
Localization	Cytoplasm
Applications	Immunohistochemistry (FFPE) : 1-2ug/ml
Limitations	This recombinant Alpha Actinin 2 antibody is available for research use only.



IHC staining of FFPE human skeletal muscle tissue with recombinant Alpha Actinin 2 antibody (clone ACTN2/7040R). Negative control inset: PBS instead of primary antibody to control for secondary binding. HIER: boil tissue sections in pH 9 10mM Tris with 1mM EDTA for 20 min and allow to cool before testing.



IHC staining of FFPE human cardiac muscle with recombinant Alpha Actinin 2 antibody (clone ACTN2/7040R). Negative control inset: PBS used instead of primary antibody to control for secondary Ab binding. HIER: boil tissue sections in pH 9 10mM Tris with 1mM EDTA for 20 min and allow to cool before testing.



SDS-PAGE analysis of purified, BSA-free recombinant Alpha Actinin 2 antibody (clone ACTN2/7040R) as confirmation of integrity and purity.

Description

Alpha actinins belong to the spectrin gene superfamily which represents a diverse group of cytoskeletal proteins, including the alpha and beta spectrins and dystrophins. Alpha actinin is an actin-binding protein with multiple roles in different cell types. In non-muscle cells, the cytoskeletal isoform is found along microfilament bundles and adherens-type junctions, where it is involved in binding actin to the membrane. In contrast, skeletal, cardiac, and smooth muscle isoforms are localized to the Z-disc and analogous dense bodies, where they help anchor the myofibrillar actin filaments. This gene encodes a muscle-specific, alpha actinin isoform that is expressed in both skeletal and cardiac muscles. Several transcript variants encoding different isoforms have been found for this gene.

Application Notes

Optimal dilution of the recombinant Alpha Actinin 2 antibody should be determined by the researcher.

Immunogen

A portion of amino acids 557-692 from the human protein was used as the immunogen for the recombinant Alpha Actinin 2 antibody.

Storage

Aliquot the recombinant Alpha Actinin 2 antibody and store frozen at -20oC or colder. Avoid repeated freeze-thaw cycles.