

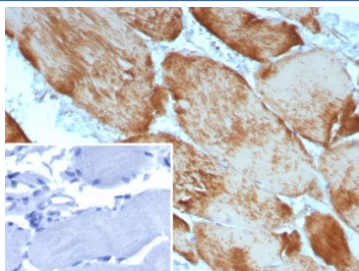
Recombinant Alpha Actin 1 Antibody / ACTA1 [clone ACTA1/9105R] (V5568)

Catalog No.	Formulation	Size
V5568-100UG	0.2 mg/ml in 1X PBS with 0.1 mg/ml BSA (US sourced), 0.05% sodium azide	100 ug
V5568-20UG	0.2 mg/ml in 1X PBS with 0.1 mg/ml BSA (US sourced), 0.05% sodium azide	20
V5568SAF-100UG	1 mg/ml in 1X PBS; BSA free, sodium azide free	100

Recombinant **RABBIT MONOCLONAL**

[Bulk quote request](#)

Availability	1-3 business days
Species Reactivity	Human
Format	Purified
Clonality	Recombinant Rabbit Monoclonal
Isotype	Rabbit IgG, kappa
Clone Name	ACTA1/9105R
Purity	Protein A/G affinity
UniProt	P68133
Localization	Cytoplasm
Applications	Immunohistochemistry (FFPE) : 1-2ug/ml
Limitations	This recombinant Alpha Actin 1 antibody is available for research use only.



IHC staining of FFPE human skeletal muscle tissue with recombinant Alpha Actin 1 (ACTA1/9105R). Inset: PBS used in place of primary Ab (secondary Ab negative control). HIER: boil tissue sections in pH 9 10mM Tris with 1mM EDTA for 20 min and allow to cool before testing.

Description

All eukaryotic cells express Actin, which often constitutes as much as 50% of total cellular protein. Actin filaments can form both stable and labile structures and are crucial components of microvilli and the contractile apparatus of muscle cells. While lower eukaryotes, such as yeast, have only one Actin gene, higher eukaryotes have several isoforms

encoded by a family of genes. At least six types of Actin are present in mammalian tissues and fall into three classes. α -Actin expression is limited to various types of muscle, whereas β and γ are the principle constituents of filaments in other tissues. Members of the small GTPase family regulate the organization of the Actin cytoskeleton. Rho controls the assembly of Actin stress fibers and focal adhesion, Rac regulates Actin filament accumulation at the plasma membrane and Cdc42 stimulates formation of filopodia.

Application Notes

Optimal dilution of the recombinant Alpha Actin 1 antibody should be determined by the researcher.

Immunogen

Recombinant human ACTA1 protein was used as the immunogen for the recombinant Alpha Actin 1 antibody.

Storage

Aliquot the recombinant Alpha Actin 1 antibody and store frozen at -20°C or colder. Avoid repeated freeze-thaw cycles.