

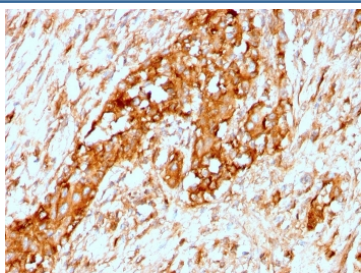
## Recombinant Alpha 1 Antitrypsin Antibody / AAT / SERPINA1 [clone AAT/3167R] (V8013)

Catalog No.	Formulation	Size
V8013-100UG	0.2 mg/ml in 1X PBS with 0.1 mg/ml BSA (US sourced) and 0.05% sodium azide	100 ug
V8013-20UG	0.2 mg/ml in 1X PBS with 0.1 mg/ml BSA (US sourced) and 0.05% sodium azide	20 ug
V8013SAF-100UG	1 mg/ml in 1X PBS; BSA free, sodium azide free	100 ug

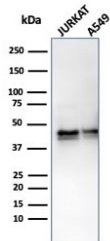
Recombinant **RABBIT MONOCLONAL**

[Bulk quote request](#)

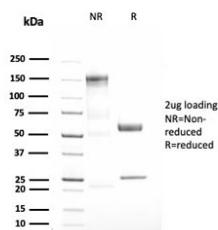
Availability	1-3 business days
Species Reactivity	Human
Format	Purified
Host	Rabbit
Clonality	Recombinant Rabbit Monoclonal
Isotype	Rabbit IgG
Clone Name	AAT/3167R
Purity	Protein A affinity chromatography
UniProt	P01009
Localization	Cytoplasmic
Applications	Immunohistochemistry (FFPE) : 1-2ug/ml Western Blot : 1-2ug/ml
Limitations	This recombinant Alpha 1 Antitrypsin antibody is available for research use only.



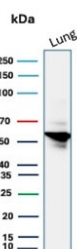
IHC staining of FFPE human breast with recombinant Alpha 1 Antitrypsin antibody (clone AAT/3167R). HIER: boil tissue sections in pH 9 10mM Tris with 1mM EDTA for 20 min and allow to cool before testing.



Western blot testing of human samples with recombinant Alpha 1 Antitrypsin antibody (clone AAT/3167R). Expected molecular weight: ~47 kDa (unmodified), 52 kDa (glycosylated).



SDS-PAGE analysis of purified, BSA-free recombinant Alpha 1 Antitrypsin antibody (clone AAT/3167R) as confirmation of integrity and purity.



Western blot testing of human lung tissue lysate with recombinant Alpha 1 Antitrypsin antibody. Expected molecular weight: 47-52 kDa depending on the level of glycosylation.

## Description

The immunohistochemical staining of AAT is useful in identification of benign and malignant hepatic tumors and yolk sac carcinomas. Positive staining for AAT is also used in detection of benign and malignant lesions of histiocytic nature. This antibody is may also useful tool in the screening of patients with cryptogenic cirrhosis or other forms of liver disease with fibrosis of uncertain origin.

## Application Notes

Optimal dilution of the recombinant Alpha 1 Antitrypsin antibody should be determined by the researcher.

## Immunogen

A recombinant human Alpha-1-Antitrypsin (AAT) partial protein was used as the immunogen for this recombinant Alpha 1 Antitrypsin antibody.

## Storage

Store the recombinant Alpha 1 Antitrypsin antibody at 2-8oC (with azide) or aliquot and store at -20oC or colder (without azide).

