

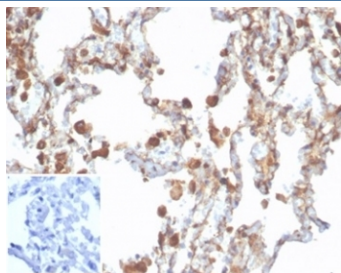
## Recombinant ALDH1A1 Antibody / Aldehyde Dehydrogenase 1A1 [clone rALDH1A1/7285] (V9481)

Catalog No.	Formulation	Size
V9481-100UG	0.2 mg/ml in 1X PBS with 0.1 mg/ml BSA (US sourced), 0.05% sodium azide	100 ug
V9481-20UG	0.2 mg/ml in 1X PBS with 0.1 mg/ml BSA (US sourced), 0.05% sodium azide	20 ug
V9481SAF-100UG	1 mg/ml in 1X PBS; BSA free, sodium azide free	100 ug

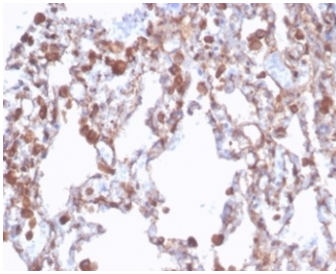
### Recombinant MOUSE MONOCLONAL

[Bulk quote request](#)

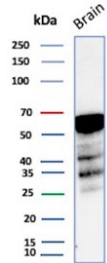
Availability	1-3 business days
Species Reactivity	Human
Format	Purified
Host	Mouse
Clonality	Recombinant Mouse Monoclonal
Isotype	Mouse IgG1, kappa
Clone Name	rALDH1A1/7285
Purity	Protein A/G affinity
UniProt	P00352
Localization	Cytoplasm
Applications	Immunohistochemistry (FFPE) : 1-2ug/ml Western Blot : 2-4ug/ml
Limitations	This recombinant ALDH1A1 antibody is available for research use only.



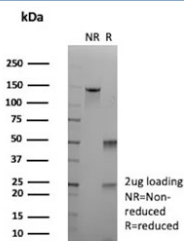
IHC staining of FFPE human lung tissue with recombinant ALDH1A1 antibody (clone rALDH1A1/7285). Negative control inset: PBS used instead of primary antibody to control for secondary Ab binding. HIER: boil tissue sections in pH 9 10mM Tris with 1mM EDTA for 20 min and allow to cool before testing.



IHC staining of FFPE human lung tissue with recombinant ALDH1A1 antibody (clone rALDH1A1/7285). HIER: boil tissue sections in pH 9 10mM Tris with 1mM EDTA for 20 min and allow to cool before testing.



Western blot testing of human brain tissue lysate using recombinant ALDH1A1 antibody (clone rALDH1A1/7285). Expected molecular weight ~55 kDa.



SDS-PAGE analysis of purified, BSA-free recombinant ALDH1A1 antibody (clone rALDH1A1/7285) as confirmation of integrity and purity.

## Description

ALDH1A1 belongs to the ALDH enzymes, a family of evolutionarily conserved enzymes comprised of 19 isoforms that are localized in the cytoplasm, mitochondria or nucleus. ALDH1A1 is predominantly expressed in the epithelium of testis, brain, eye, liver, kidney, as well as neural and hematopoietic stem cells. Reportedly, high ALDH1A1 expression is found in solitary fibrous tumor (SFT) and hemangiopericytoma (HPC), compared to meningiomas and synovial sarcomas. In combination with CD34, ALDH1A1 may be useful for the differentiation among SFT, HPC, meningioma, and synovial sarcoma.

## Application Notes

Optimal dilution of the recombinant ALDH1A1 antibody should be determined by the researcher.

## Immunogen

A portion of amino acids 315-434 was used as the immunogen for the recombinant ALDH1A1 antibody.

## Storage

Aliquot the recombinant ALDH1A1 antibody and store frozen at -20oC or colder. Avoid repeated freeze-thaw cycles.

