

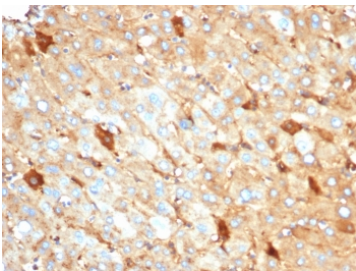
Recombinant ALB Antibody / Albumin [clone rALB/6410] (V8956)

Catalog No.	Formulation	Size
V8956-100UG	0.2 mg/ml in 1X PBS with 0.1 mg/ml BSA (US sourced), 0.05% sodium azide	100 ug
V8956-20UG	0.2 mg/ml in 1X PBS with 0.1 mg/ml BSA (US sourced), 0.05% sodium azide	20 ug
V8956SAF-100UG	1 mg/ml in 1X PBS; BSA free, sodium azide free	100 ug

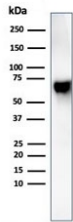
Recombinant **MOUSE MONOCLONAL**

[Bulk quote request](#)

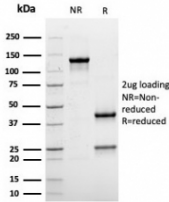
Availability	1-3 business days
Species Reactivity	Human
Format	Purified
Host	Mouse
Clonality	Recombinant Mouse Monoclonal
Isotype	Mouse IgG1, kappa
Clone Name	rALB/6410
Purity	Protein A/G affinity
UniProt	P02768
Localization	Cell surface, Cytoplasm
Applications	ELISA (order BSA-free Format For Coating) : Western Blot : 1-2ug/ml Immunohistochemistry (FFPE) : 1-2ug/ml
Limitations	This recombinant ALB antibody is available for research use only.



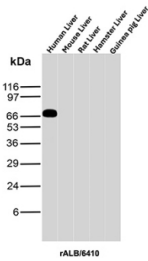
IHC staining of FFPE human liver tissue with recombinant ALB antibody (clone rALB/6410). HIER: boil tissue sections in pH 9 10mM Tris with 1mM EDTA for 20 min and allow to cool before testing.



Western blot analysis of human liver tissue lysate using recombinant ALB antibody (clone rALB/6410). Predicted molecular weight ~69 kDa.



SDS-PAGE analysis of purified, BSA-free recombinant ALB antibody (clone rALB/6410) as confirmation of integrity and purity.



ALB Antibody Liver Tissue WB. Western blot analysis of human, mouse, rat, hamster, and guinea pig liver tissue lysates using ALB antibody detects a prominent band at approximately 65-70 kDa in human liver, consistent with the predicted molecular weight of Albumin (ALB), with minimal signal observed in other species under these conditions; detection was performed with clone rALB/6410.

Description

Albumin is a soluble, monomeric protein, which comprises about one half of the blood serum protein. Albumin functions primarily as a carrier protein for steroids, fatty acids, and thyroid hormones and plays a role in stabilizing extracellular fluid volume. Albumin is synthesized in the liver as preproalbumin, which has an N-terminal peptide that is removed before the nascent protein is released from the rough endoplasmic reticulum. The product, proalbumin, is in turn cleaved in the Golgi vesicles to produce the secreted form of albumin.

For broader detection of Albumin in liver function and hepatocyte biology studies, see our [Albumin antibody \(clone ALB/2141\)](#).

Application Notes

Optimal dilution of the recombinant ALB antibody should be determined by the researcher.

Immunogen

Recombinant full-length human ALB protein was used as the immunogen for the recombinant ALB antibody.

Storage

Aliquot the recombinant ALB antibody and store frozen at -20°C or colder. Avoid repeated freeze-thaw cycles.

