

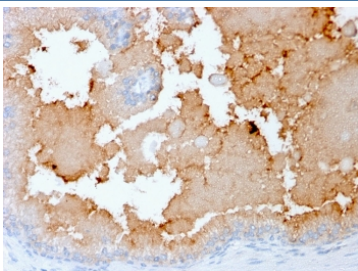
Recombinant AKT1 Antibody [clone rAKT1/2491] (V7745)

Catalog No.	Formulation	Size
V7745-100UG	0.2 mg/ml in 1X PBS with 0.1 mg/ml BSA (US sourced) and 0.05% sodium azide	100 ug
V7745-20UG	0.2 mg/ml in 1X PBS with 0.1 mg/ml BSA (US sourced) and 0.05% sodium azide	20 ug
V7745SAF-100UG	1 mg/ml in 1X PBS; BSA free, sodium azide free	100 ug

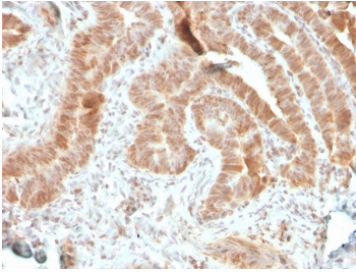
Recombinant **MOUSE MONOCLONAL**

[Bulk quote request](#)

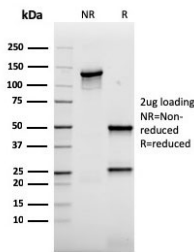
Availability	1-3 business days
Species Reactivity	Human
Format	Purified
Host	Mouse
Clonality	Recombinant Mouse Monoclonal
Isotype	Mouse IgG1, kappa
Clone Name	rAKT1/2491
Purity	Protein G affinity chromatography
UniProt	P31749
Localization	Nucleus, plasma membrane, cytoplasm
Applications	Immunohistochemistry (FFPE) : 1-2ug/ml Western Blot : 1-2ug/ml
Limitations	This recombinant AKT1 antibody is available for research use only.



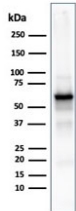
IHC staining of FFPE human prostate carcinoma with recombinant AKT1 antibody (clone rAKT1/2491). HIER: boil tissue sections in pH 9 10mM Tris with 1mM EDTA for 10-20 min followed by cooling at RT for 20 min.



IHC staining of FFPE human colon carcinoma with recombinant AKT1 antibody (clone rAKT1/2491). HIER: boil tissue sections in pH 9 10mM Tris with 1mM EDTA for 10-20 min followed by cooling at RT for 20 min.



SDS-PAGE analysis of purified, BSA-free recombinant AKT1 antibody (clone rAKT1/2491) as confirmation of integrity and purity.



Western blot testing of human MCF7 cell lysate with AKT1 antibody. Predicted molecular weight ~56 kDa.

Description

The serine/threonine kinase Akt family contains several members, including Akt1 (also designated PKB or RacPK), Akt2 (also designated PKB tyrosine residues 740 and 751, which bind the subunit of the phosphatidylinositol 3-kinase (PI 3-kinase) complex. Activation of Akt1 by insulin or insulin-growth factor-1 (IGF-1) results in phosphorylation of both Thr 308 and Ser 473. Akt proteins become phosphorylated and activated in insulin/IGF-1-stimulated cells by an upstream kinase(s), and the activation of Akt1 and Akt2 is inhibited by the PI kinase inhibitor wortmannin.

Application Notes

Optimal dilution of the recombinant AKT1 antibody should be determined by the researcher.

Immunogen

Amino acids 85-189 from the human protein were used as the immunogen for the recombinant AKT1 antibody.

Storage

Store the recombinant AKT1 antibody at 2-8°C (with azide) or aliquot and store at -20°C or colder (without azide).

