

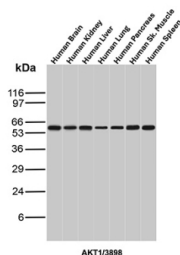
Recombinant AKT1 Antibody [clone AKT1/3898R] (V8442)

Catalog No.	Formulation	Size
V8442-100UG	0.2 mg/ml in 1X PBS with 0.1 mg/ml BSA (US sourced) and 0.05% sodium azide	100 ug
V8442-20UG	0.2 mg/ml in 1X PBS with 0.1 mg/ml BSA (US sourced) and 0.05% sodium azide	20 ug
V8442SAF-100UG	1 mg/ml in 1X PBS; BSA free, sodium azide free	100 ug

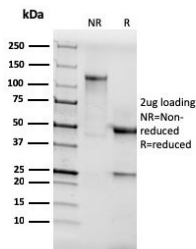
Recombinant **RABBIT MONOCLONAL**

[Bulk quote request](#)

Availability	1-3 business days
Species Reactivity	Human
Format	Purified
Host	Rabbit
Clonality	Recombinant Rabbit Monoclonal
Isotype	Rabbit IgG
Clone Name	AKT1/3898R
Purity	Protein A affinity chromatography
UniProt	P31749
Localization	Nuclear, cytoplasmic, cell surface
Applications	Western Blot : 2-4ug/ml ELISA : order Ab without BSA for coating
Limitations	This recombinant AKT1 antibody is available for research use only.



AKT1 Antibody Multi-Tissue WB. Western blot analysis of human brain, kidney, liver, lung, pancreas, skeletal muscle, and spleen tissue lysates using AKT1 antibody (clone AKT1/3898R) detects a band at approximately 55-60 kDa, consistent with the predicted molecular weight of AKT1, with uniform expression observed across tissues.



SDS-PAGE analysis of purified, BSA-free recombinant AKT1 antibody (clone AKT1/3898R) as confirmation of integrity and purity.

Description

Recognizes a protein of 62kDa, which is identified as AKT1. The serine/threonine kinase Akt family contains several members, including Akt1 (also designated PKB or RacPK), Akt2 (also designated PKB tyrosine residues 740 and 751, which bind the subunit of the phosphatidylinositol 3-kinase (PI 3-kinase) complex. Activation of Akt1 by insulin or insulin-growth factor-1 (IGF-1) results in phosphorylation of both Thr 308 and Ser 473. Akt proteins become phosphorylated and activated in insulin/IGF-1-stimulated cells by an upstream kinase(s), and the activation of Akt1 and Akt2 is inhibited by the PI kinase inhibitor wortmannin.

For a microarray-validated AKT1 antibody supporting high-specificity detection, see our [AKT1 antibody \(clone AKT1/2552\)](#).

Application Notes

Optimal dilution of the recombinant AKT1 antibody should be determined by the researcher.

Immunogen

A portion of amino acids 85-189 from the human protein was used as the immunogen for the recombinant AKT1 antibody.

Storage

Store the recombinant AKT1 antibody at 2-8oC (with azide) or aliquot and store at -20oC or colder (without azide).