

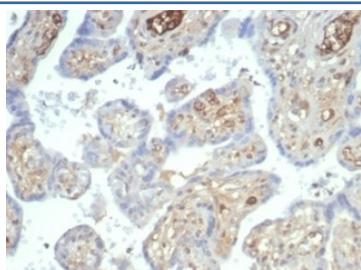
Recombinant AFP Antibody / Alpha Fetoprotein [clone rAFP/7257] (V9476)

Catalog No.	Formulation	Size
V9476-100UG	0.2 mg/ml in 1X PBS with 0.1 mg/ml BSA (US sourced), 0.05% sodium azide	100 ug
V9476-20UG	0.2 mg/ml in 1X PBS with 0.1 mg/ml BSA (US sourced), 0.05% sodium azide	20 ug
V9476SAF-100UG	1 mg/ml in 1X PBS; BSA free, sodium azide free	100 ug

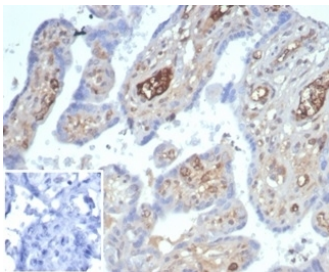
Recombinant **MOUSE MONOCLONAL**

[Bulk quote request](#)

Availability	1-3 business days
Species Reactivity	Human
Format	Purified
Clonality	Recombinant Mouse Monoclonal
Isotype	Mouse IgG1, kappa
Clone Name	rAFP/7257
Purity	Protein A/G affinity
UniProt	P02771
Localization	Cytoplasm
Applications	Immunohistochemistry (FFPE) : 1-2ug/ml
Limitations	This recombinant AFP antibody is available for research use only.



IHC staining of FFPE human placental tissue with recombinant AFP antibody (clone rAFP/7257) at 2ug/ml in PBS for 30min RT. Cytoplasmic staining observed. HIER: boil tissue sections in pH 9 10mM Tris with 1mM EDTA for 20 min and allow to cool before testing.



IHC staining of FFPE human placental tissue with recombinant AFP antibody (clone rAFP/7257) at 2ug/ml in PBS for 30min RT. Negative control inset: PBS instead of primary antibody to control for secondary binding. HIER: boil tissue sections in pH 9 10mM Tris with 1mM EDTA for 20 min and allow to cool before testing.

Description

It recognizes an oncofetal glycoprotein with a single chain of 70kDa, which is identified as alpha fetoprotein (AFP). This MAbs is highly specific to AFP and shows no cross-reaction with other oncofetal antigens or serum albumin. The yolk sac and the liver produce AFP during fetal life. AFP expression in adults is often associated with hepatoma or teratoma. However, hereditary persistence of alpha-fetoprotein may also be found in individuals with no obvious pathology. The protein is thought to be the fetal counterpart of serum albumin, and the AFP and albumin genes are present in tandem in the same transcriptional orientation on chromosome 4. AFP is found in monomeric as well as dimeric and trimeric forms, and binds copper, nickel, fatty acids and bilirubin. The level of AFP in amniotic fluid is used to measure renal loss of protein to screen for spinal bifida and anencephaly.

Application Notes

Optimal dilution of the recombinant AFP antibody should be determined by the researcher.

Immunogen

Recombinant human full-length Alpha Fetoprotein protein was used as the immunogen for the recombinant AFP antibody.

Storage

Aliquot the recombinant AFP antibody and store frozen at -20oC or colder. Avoid repeated freeze-thaw cycles.