

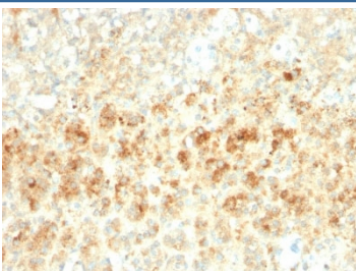
## Recombinant Adipophilin Antibody / ADRP / Perilipin 2 / PLIN2 [clone ADFP/2755R] (V3970)

Catalog No.	Formulation	Size
V3970-100UG	0.2 mg/ml in 1X PBS with 0.1 mg/ml BSA (US sourced) and 0.05% sodium azide	100 ug
V3970-20UG	0.2 mg/ml in 1X PBS with 0.1 mg/ml BSA (US sourced) and 0.05% sodium azide	20 ug
V3970SAF-100UG	1 mg/ml in 1X PBS; BSA free, sodium azide free	100 ug
V3970IHC-7ML	Prediluted in 1X PBS with 0.1 mg/ml BSA (US sourced) and 0.05% sodium azide; *For IHC use only*	7 ml

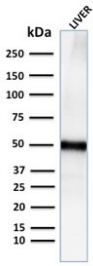
Recombinant **RABBIT MONOCLONAL**

[Bulk quote request](#)

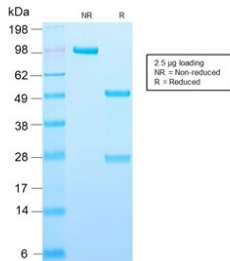
<b>Species Reactivity</b>	Human
<b>Format</b>	Purified
<b>Host</b>	Rabbit
<b>Clonality</b>	Recombinant Rabbit Monoclonal
<b>Isotype</b>	Rabbit IgG, kappa
<b>Clone Name</b>	ADFP/2755R
<b>Purity</b>	Protein A affinity chromatography
<b>UniProt</b>	Q99541
<b>Localization</b>	Cytoplasmic
<b>Applications</b>	ELISA (order BSA/sodium Azide-free Format For Coating) : Western Blot : 1-2ug/ml Immunohistochemistry (FFPE) : 1-2ug/ml for 30 min at RT
<b>Limitations</b>	This recombinant Adipophilin antibody is available for research use only.



Adipophilin Antibody FFPE Adrenal Tissue IHC. Immunohistochemistry staining of FFPE human adrenal tissue with recombinant Adipophilin antibody (clone ADFP/2755R). Required HIER: steam sections in pH6, 10mM citrate buffer for 10-20 min.



Adipophilin Antibody Human Liver WB. Western blot testing of human liver lysate with recombinant Adipophilin antibody. Predicted molecular weight ~48 kDa.



SDS-PAGE analysis of purified, BSA-free recombinant Adipophilin antibody (clone ADFP/2755R) as confirmation of integrity and purity.

## Description

Adipophilin, encoded by the PLIN2 gene, is a widely expressed lipid droplet protein involved in cellular lipid accumulation. The Recombinant Adipophilin Antibody recognizes a protein of 48kDa, which is identified as Adipophilin. It belongs to the perilipin family, members of which coat intracellular lipid storage droplets. This protein is associated with the lipid globule surface membrane material, and maybe involved in development and maintenance of adipose tissue. However, it is not restricted to adipocytes as previously thought, but is found in a wide range of cultured cell lines, including fibroblasts, endothelial and epithelial cells, and tissues, such as lactating mammary gland, adrenal cortex, Sertoli and Leydig cells, and hepatocytes in alcoholic liver cirrhosis, suggesting that it may serve as a marker of lipid accumulation in diverse cell types and diseases.

This Recombinant Adipophilin Antibody complements a related [Adipophilin antibody](#) targeting ADRP, PLIN2, and Perilipin 2.

## Application Notes

Titering of the recombinant Adipophilin antibody may be required for optimal performance.

1. The prediluted format is supplied in a dropper bottle and is optimized for use in IHC. After epitope retrieval step (if required), drip mAb solution onto the tissue section and incubate at RT for 30 min.

## Immunogen

A portion of amino acids 249-376 from the human protein were used as the immunogen for this recombinant Adipophilin antibody.

## Storage

The recombinant Adipophilin antibody (with azide) can be stored at 2-8°C. The azide-free format should be aliquoted and stored at -20°C or colder.

