

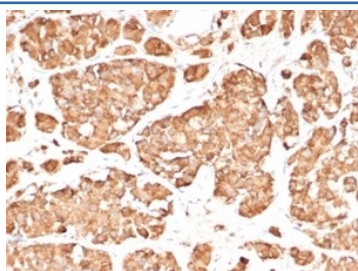
Recombinant ACTH Antibody (Synacthen) [clone rCLIP/3814] (V8807)

Catalog No.	Formulation	Size
V8807-100UG	0.2 mg/ml in 1X PBS with 0.1 mg/ml BSA (US sourced), 0.05% sodium azide	100 ug
V8807-20UG	0.2 mg/ml in 1X PBS with 0.1 mg/ml BSA (US sourced), 0.05% sodium azide	20 ug
V8807SAF-100UG	1 mg/ml in 1X PBS; BSA free, sodium azide free	100 ug

Recombinant **MOUSE MONOCLONAL**

[Bulk quote request](#)

Availability	1-3 business days
Species Reactivity	Human, Mouse and Rat (broad species reactivity predicted)
Format	Purified
Clonality	Recombinant Mouse Monoclonal
Isotype	Mouse IgG1, kappa
Clone Name	rCLIP/3814
Purity	Protein A/G affinity
UniProt	P01189
Localization	Cytoplasm, Secreted
Applications	ELISA (For Coating Order BSA-free Format) : Immunohistochemistry (FFPE) : 1-2ug/ml
Limitations	This recombinant ACTH antibody is available for research use only.



IHC staining of FFPE human pituitary gland tissue with recombinant ACTH antibody (clone rCLIP/3814) at 2ug/ml. HIER: boil tissue sections in pH 9 10mM Tris with 1mM EDTA for 20 min and allow to cool before testing.

Description

ACTH (same as Corticotropin) is a 39 amino acid active peptide produced by the anterior pituitary. This MAb is specific to Synacthen (aa1-24 of ACTH); does not react with CLIP (aa17-39 of ACTH). POMC (pro-opiomelanocortin or corticotropin-lipotropin) is a 267 amino acid polypeptide hormone precursor that goes through extensive, tissue-specific

posttranslational processing by convertases. POMC is cleaved into ten hormone chains named NPP, ACTH, alpha-MSH (Melanocyte Stimulating Hormone), beta-MSH, gamma-MSH, CLIP (corticotropin-like intermediary peptide), Lipotropin-beta, Lipotropin-gamma, beta-endorphin and Met-enkephalin.

Application Notes

Optimal dilution of the recombinant ACTH antibody should be determined by the researcher.

Immunogen

A recombinant protein fragment from the N-terminal region of human ACTH was used as the immunogen for the recombinant ACTH antibody.

Storage

Aliquot the recombinant ACTH antibody and store frozen at -20oC or colder. Avoid repeated freeze-thaw cycles.