

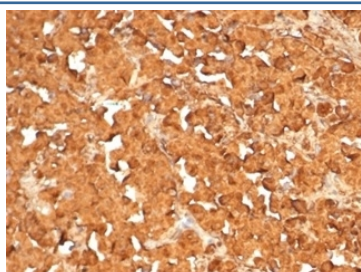
Recombinant ACTH Antibody [clone rCLIP4278] (V9716)

Catalog No.	Formulation	Size
V9716-100UG	0.2 mg/ml in 1X PBS with 0.1 mg/ml BSA (US sourced), 0.05% sodium azide	100 ug
V9716-20UG	0.2 mg/ml in 1X PBS with 0.1 mg/ml BSA (US sourced), 0.05% sodium azide	20 ug
V9716SAF-100UG	1 mg/ml in 1X PBS; BSA free, sodium azide free	100 ug

Recombinant **MOUSE MONOCLONAL**

[Bulk quote request](#)

Availability	1-3 business days
Species Reactivity	Human
Format	Purified
Clonality	Recombinant Mouse Monoclonal
Isotype	Mouse IgG2a, kappa
Clone Name	rCLIP4278
Purity	Protein A/G affinity
UniProt	P01189
Localization	Cytoplasm
Applications	Immunohistochemistry (FFPE) : 1-2ug/ml
Limitations	This recombinant ACTH antibody is available for research use only.



IHC staining of FFPE human pituitary tumor tissue with recombinant ACTH antibody (clone rCLIP4278). HIER: boil tissue sections in pH 9 10mM Tris with 1mM EDTA for 20 min and allow to cool before testing.

Description

ACTH (same as Corticotropin) is a 39 amino acid active peptide produced by the anterior pituitary. POMC (pro-opiomelanocortin or corticotropin-lipotropin) is a 267 amino acid polypeptide hormone precursor that goes through extensive, tissue-specific posttranslational processing by convertases. POMC is cleaved into ten hormone chains named NPP, ACTH, alpha-MSH (Melanocyte Stimulating Hormone), beta-MSH, gamma-MSH, CLIP (corticotropin-like

intermediary peptide), Lipotropin-beta, Lipotropin-gamma, beta-endorphin and Met-enkephalin. ACTH is also produced by cells of immune system (T-cells, B-cells, and macrophages) in response to stimuli associated with stress. Anti-ACTH is a useful marker in classification of pituitary tumors and the study of pituitary disease. It reacts with ACTH-producing cells (corticotrophs). It also may react with other tumors (e.g. some small cell carcinomas of the lung) causing paraneoplastic syndromes by secreting ACTH.

Application Notes

Optimal dilution of the recombinant ACTH antibody should be determined by the researcher.

Immunogen

A portion of amino acids 1-24 of human ACTH was used as the immunogen for the recombinant ACTH antibody.

Storage

Aliquot the recombinant ACTH antibody and store frozen at -20°C or colder. Avoid repeated freeze-thaw cycles.