

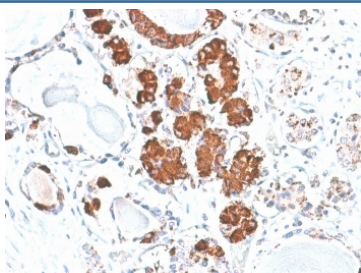
Recombinant ACTH Antibody (CLIP polypeptide) [clone rCLIP/1407] (V8938)

Catalog No.	Formulation	Size
V8938-100UG	0.2 mg/ml in 1X PBS with 0.1 mg/ml BSA (US sourced), 0.05% sodium azide	100 ug
V8938-20UG	0.2 mg/ml in 1X PBS with 0.1 mg/ml BSA (US sourced), 0.05% sodium azide	20 ug
V8938SAF-100UG	1 mg/ml in 1X PBS; BSA free, sodium azide free	100 ug

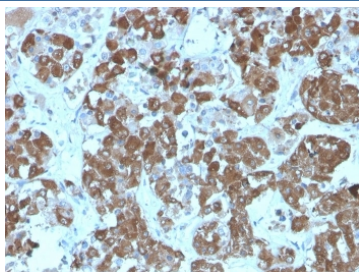
Recombinant MOUSE MONOCLONAL

[Bulk quote request](#)

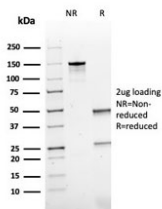
Availability	1-3 business days
Species Reactivity	Human, Mouse and Rat (broad species reactivity predicted)
Format	Purified
Host	Mouse
Clonality	Recombinant Mouse Monoclonal
Isotype	Mouse IgG1, kappa
Clone Name	rCLIP/1407
Purity	Protein A/G affinity
UniProt	P01189
Localization	Cytoplasmic
Applications	Immunohistochemistry (FFPE) : 1-2ug/ml
Limitations	This recombinant ACTH antibody is available for research use only.



IHC staining of FFPE human pituitary with recombinant ACTH antibody (clone rCLIP/1407). HIER: boil tissue sections in pH 9 10mM Tris with 1mM EDTA for 20 min and allow to cool before testing.



IHC staining of FFPE human pituitary tissue with recombinant ACTH antibody (clone rCLIP/1407). HIER: boil tissue sections in pH 9 10mM Tris with 1mM EDTA for 20 min and allow to cool before testing.



SDS-PAGE analysis of purified, BSA-free recombinant ACTH antibody (clone rCLIP/1407) as confirmation of integrity and purity.

Description

POMC (pro-opiomelanocortin or corticotropin-lipotropin) is a 267 amino acid polypeptide hormone precursor that goes through extensive, tissue-specific posttranslational processing by convertases. POMC is cleaved into ten hormone chains named NPP, ACTH, alpha-MSH (Melanocyte Stimulating Hormone), beta-MSH, gamma-MSH, CLIP (corticotropin-like intermediary peptide), Lipotropin-beta, Lipotropin-gamma, beta-endorphin and Met-enkephalin. ACTH is also produced by cells of immune system (T-cells, B-cells, and macrophages) in response to stimuli associated with stress. Anti-ACTH is a useful marker in classification of pituitary tumors and the study of pituitary disease. It reacts with ACTH-producing cells (corticotrophs). It also may react with other tumors (e.g. some small cell carcinomas of the lung) causing paraneoplastic syndromes by secreting ACTH.

Application Notes

Optimal dilution of the recombinant ACTH antibody should be determined by the researcher.

Immunogen

Amino acids NGAEDSAEAFPLEF from human ACTH was used as the immunogen for the recombinant ACTH antibody. This sequence is from the CLIP or Corticotropin-like intermediary peptide polypeptide of ACTH.

Storage

Aliquot the recombinant ACTH antibody and store frozen at -20oC or colder. Avoid repeated freeze-thaw cycles.