

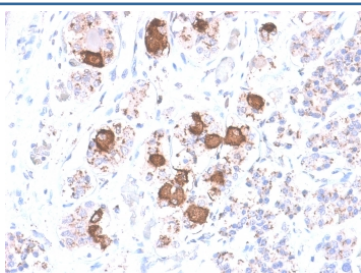
Recombinant ACTH Antibody / CLIP [clone CLIP/2040R] (V3669)

Catalog No.	Formulation	Size
V3669-100UG	0.2 mg/ml in 1X PBS with 0.1 mg/ml BSA (US sourced) and 0.05% sodium azide	100 ug
V3669-20UG	0.2 mg/ml in 1X PBS with 0.1 mg/ml BSA (US sourced) and 0.05% sodium azide	20 ug
V3669SAF-100UG	1 mg/ml in 1X PBS; BSA free, sodium azide free	100 ug
V3669IHC-7ML	Prediluted in 1X PBS with 0.1 mg/ml BSA (US sourced) and 0.05% sodium azide; *For IHC use only*	7 ml

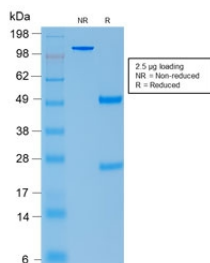
Recombinant **RABBIT MONOCLONAL**

[Bulk quote request](#)

Availability	1-3 business days
Species Reactivity	Human, Mouse, Rat
Format	Purified
Clonality	Recombinant Rabbit Monoclonal
Isotype	Rabbit IgG, kappa
Clone Name	CLIP/2040R
Purity	Protein A affinity chromatography
UniProt	P01189
Localization	Cytoplasm, secreted
Applications	Immunohistochemistry (FFPE) : 1-2ug/ml for 30 min at RT
Limitations	This recombinant ACTH antibody is available for research use only.



IHC testing of FFPE human pituitary gland with recombinant ACTH antibody (clone CLIP/2040R). Required HIER: boil tissue sections in 10mM citrate buffer, pH 6, for 10-20 min followed by cooling at RT for 20 min.



SDS-PAGE analysis of purified, BSA-free recombinant ACTH antibody (clone CLIP/2040R) as confirmation of integrity and purity.

Description

ACTH (same as Corticotropin) is a 39 amino acid active peptide produced by the anterior pituitary. This mAb is specific to CLIP (aa 17-39 of ACTH) and does not react with Synacthen (aa 1-24 of ACTH). POMC (pro-opiomelanocortin or corticotropin-lipotropin) is a 267 amino acid polypeptide hormone precursor that goes through extensive, tissue-specific posttranslational processing by convertases. POMC is cleaved into ten hormone chains named NPP, ACTH, alpha-MSH (Melanocyte Stimulating Hormone), beta-MSH, gamma-MSH, CLIP (corticotropin-like intermediary peptide), Lipotropin-beta, Lipotropin-gamma, beta-endorphin and Met-enkephalin. ACTH is also produced by cells of immune system (T-cells, B-cells, and macrophages) in response to stimuli associated with stress. Anti-ACTH is a useful marker in classification of pituitary tumors and the study of pituitary disease. It reacts with ACTH-producing cells (corticotrophs). It also may react with other tumors (e.g. some small cell carcinomas of the lung) causing paraneoplastic syndromes by secreting ACTH.

Application Notes

The optimal dilution of the recombinant ACTH antibody for each application should be determined by the researcher.

1. The prediluted format is supplied in a dropper bottle and is optimized for use in IHC. After epitope retrieval step (if required), drip mAb solution onto the tissue section and incubate at RT for 30 min.

Immunogen

Amino acids 25-39 (NGAEDESAEAFPLEF) of Adrenocorticotrophic hormone (CLIP sequence) were used as the immunogen for this ACTH antibody.

Storage

Store the recombinant ACTH antibody at 2-8°C (with azide) or aliquot and store at -20°C or colder (without azide).