

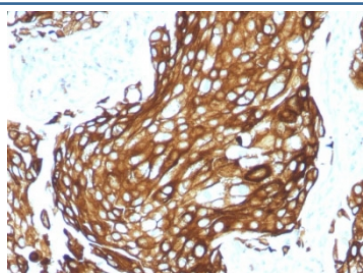
## Recombinant Acidic Cytokeratin Antibody / Rabbit Monoclonal [clone KRTL/1577R] (V7274)

Catalog No.	Formulation	Size
V7274-100UG	0.2 mg/ml in 1X PBS with 0.1 mg/ml BSA (US sourced) and 0.05% sodium azide	100 ug
V7274-20UG	0.2 mg/ml in 1X PBS with 0.1 mg/ml BSA (US sourced) and 0.05% sodium azide	20 ug
V7274SAF-100UG	1 mg/ml in 1X PBS; BSA free, sodium azide free	100 ug
V7274IHC-7ML	Prediluted in 1X PBS with 0.1 mg/ml BSA (US sourced) and 0.05% sodium azide; *For IHC use only*	7 ml

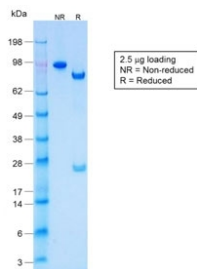
### Recombinant RABBIT MONOCLONAL

[Bulk quote request](#)

Availability	1-3 business days
Species Reactivity	Human
Format	Purified
Host	Rabbit
Clonality	Recombinant Rabbit Monoclonal
Isotype	Rabbit IgG, kappa
Clone Name	KRTL/1577R
Purity	Protein A affinity chromatography
UniProt	Q7Z794
Localization	Cytoplasmic
Applications	Immunohistochemistry (FFPE) : 1-2ug/ml for 30 min at RT
Limitations	This recombinant Acidic Cytokeratin antibody is available for research use only.



IHC staining of FFPE human lung carcinoma with recombinant Acidic Cytokeratin. HIER: boil tissue sections in pH 9 10mM Tris with 1mM EDTA for 10-20 min and allow to cool before testing.



SDS-PAGE analysis of purified, BSA-free recombinant Acidic Cytokeratin antibody (clone KRTL/1577R) as confirmation of integrity and purity.

## Description

There are two types of cytokeratins/keratins/CKs: the acidic type I cytokeratins and the basic or neutral type II cytokeratins. The subsets of cytokeratins which an epithelial cell expresses depends mainly on the type of epithelium, the moment in the course of terminal differentiation and the stage of development. Thus this specific keratin fingerprint allows the classification of all epithelia upon their keratin expression profile. Furthermore this applies also to the malignant counterparts of the epithelia (carcinomas), as the keratin profile tends to remain constant when an epithelium undergoes malignant transformation. The main clinical implication is that the study of the keratin profile by immunohistochemistry techniques is a tool of immense value widely used for tumor diagnosis and characterization in surgical pathology. [Wiki]

## Application Notes

Titration of the recombinant Acidic Cytokeratin antibody may be required for optimal performance.

1. This antibody will detect cytokeratins -10, -14, -15, -16, -19.
2. The prediluted format is supplied in a dropper bottle and is optimized for use in IHC. After epitope retrieval step (if required), drip mAb solution onto the tissue section and incubate at RT for 30 min

## Immunogen

An amino acid sequence common to acidic/type I keratins (1) was used as the immunogen for the recombinant Acidic Cytokeratin antibody.

## Storage

Store the recombinant Acidic Cytokeratin antibody at 2-8°C (with azide) or aliquot and store at -20°C or colder (without azide).