

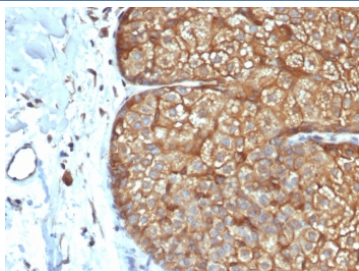
Recombinant Acidic Cytokeratin Antibody (LMW / Type I) [clone rKRTL/6616] (V9300)

Catalog No.	Formulation	Size
V9300-100UG	0.2 mg/ml in 1X PBS with 0.1 mg/ml BSA (US sourced), 0.05% sodium azide	100 ug
V9300-20UG	0.2 mg/ml in 1X PBS with 0.1 mg/ml BSA (US sourced), 0.05% sodium azide	20 ug
V9300SAF-100UG	1 mg/ml in 1X PBS; BSA free, sodium azide free	100 ug

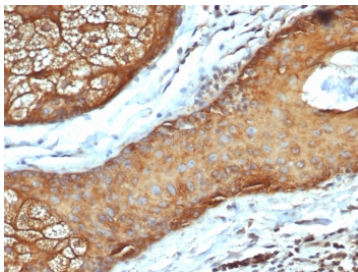
Recombinant MOUSE MONOCLONAL

[Bulk quote request](#)

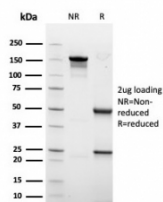
Availability	1-3 business days
Species Reactivity	Human
Format	Purified
Host	Mouse
Clonality	Recombinant Mouse Monoclonal
Isotype	Mouse IgG1, kappa
Clone Name	rKRTL/6616
Purity	Protein A/G affinity
UniProt	Q7Z794
Localization	Cytoplasmic
Applications	Immunohistochemistry (FFPE) : 1-2ug/ml
Limitations	This recombinant Acidic Cytokeratin antibody is available for research use only.



IHC staining of FFPE human sebaceous gland with recombinant Acidic Cytokeratin antibody (clone rKRTL/6616). HIER: boil tissue sections in pH 9 10mM Tris with 1mM EDTA for 20 min and allow to cool before testing.



IHC staining of FFPE human skin tissue with recombinant Acidic Cytokeratin antibody (clone rKRTL/6616). HIER: boil tissue sections in pH 9 10mM Tris with 1mM EDTA for 20 min and allow to cool before testing.



SDS-PAGE analysis of purified, BSA-free recombinant Acidic Cytokeratin antibody (clone rKRTL/6616) as confirmation of integrity and purity.

Description

The keratins are the typical intermediate filament proteins of epithelia, showing an outstanding degree of molecular diversity. Heteropolymeric filaments are formed by pairing of type I and type II molecules. In humans 54 functional keratin genes exist. They are expressed in highly specific patterns related to the epithelial type and stage of cellular differentiation. This antibody can detect high molecular weight CK10, CK14, CK15 and CK16 and low molecular weight CK19. Its usually used in a cytokeratin cocktail with type II cytokeratin antibody.

Application Notes

Optimal dilution of the recombinant Acidic Cytokeratin antibody should be determined by the researcher.

Immunogen

A synthetic peptide sequence common to Type I Cytokeratins was used as the immunogen for the recombinant Acidic Cytokeratin antibody.

Storage

Aliquot the recombinant Acidic Cytokeratin antibody and store frozen at -20oC or colder. Avoid repeated freeze-thaw cycles.