

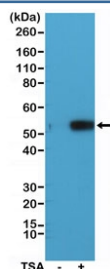
Recombinant Acetylated Alpha Tubulin Antibody / TUBA4A (K40) [clone RM318] (R20337)

Catalog No.	Formulation	Size
R20337-0.1ML	Antibody in PBS with 50% glycerol, 1% BSA and 0.09% sodium azide	100 ul

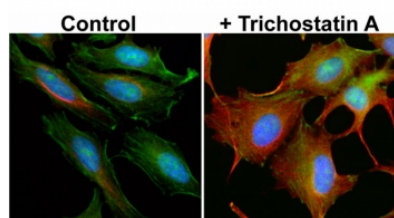
Recombinant **RABBIT MONOCLONAL**

[Bulk quote request](#)

Availability	1-3 business days
Species Reactivity	Human
Format	Purified
Host	Rabbit
Clonality	Recombinant Rabbit Monoclonal
Isotype	Rabbit IgG
Clone Name	RM318
Purity	Protein A purified from animal origin-free supernatant
UniProt	P68366
Applications	Western Blot : 1:1000-1:2000 Immunofluorescence/Immunocytochemistry : 1:1000-1:5000
Limitations	This recombinant Acetylated Alpha Tubulin antibody is available for research use only.



Western blot of extracts from human HeLa cells, untreated (-) or treated (+) with Trichostatin A (TSA), using the recombinant Acetylated Alpha Tubulin antibody at 1:1000.



IF/ICC testing of human HeLa cells, untreated (-) or treated (+) with Trichostatin A, with recombinant Acetylated Alpha Tubulin antibody (Red) at 1:5000. Green = actin fillaments, Blue = DAPI nuclear counterstain.

Description

The acetylated residue of alpha tubulin is K40, which is catalyzed by alpha tubulin acetyl-transferase (ATAT) in humans. The acetylation of K40 on alpha tubulin is a hallmark of stable microtubules. [Wiki]

Application Notes

The stated application concentrations are suggested starting points. Titration of the recombinant Acetylated Alpha Tubulin antibody may be required due to differences in protocols and secondary/substrate sensitivity.

Immunogen

An acetyl-peptide corresponding to the K40 region of human alpha tubulin was used as the immunogen for the recombinant Acetylated Alpha Tubulin antibody.

Storage

Store the recombinant Acetylated Alpha Tubulin antibody at -20oC.