

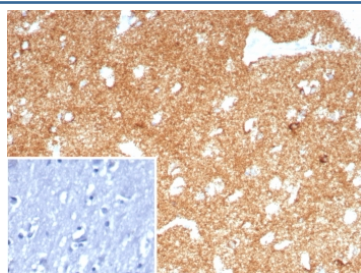
## Recombinant A2MR Antibody / CD91 / LRP1 [clone LRP1/8771R] (V4303)

Catalog No.	Formulation	Size
V4303-100UG	0.2 mg/ml in 1X PBS with 0.1 mg/ml BSA (US sourced), 0.05% sodium azide	100 ug
V4303-20UG	0.2 mg/ml in 1X PBS with 0.1 mg/ml BSA (US sourced), 0.05% sodium azide	20 ug
V4303SAF-100UG	1 mg/ml in 1X PBS; BSA free, sodium azide free	100 ug

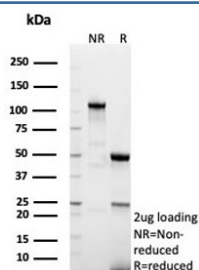
Recombinant **RABBIT MONOCLONAL**

[Bulk quote request](#)

<b>Availability</b>	1-3 business days
<b>Species Reactivity</b>	Human
<b>Format</b>	Purified
<b>Host</b>	Rabbit
<b>Clonality</b>	Recombinant Rabbit Monoclonal
<b>Isotype</b>	Rabbit IgG, kappa
<b>Clone Name</b>	LRP1/8771R
<b>Purity</b>	Protein A/G affinity
<b>UniProt</b>	Q07954
<b>Localization</b>	Cytoplasm, Nucleus, Cell surface
<b>Applications</b>	Immunohistochemistry (FFPE) : 1-2ug/ml for 30 minutes at RT
<b>Limitations</b>	This recombinant A2MR antibody is available for research use only.



IHC staining of FFPE human brain tissue with recombinant A2MR antibody (clone LRP1/8771R) Inset: PBS used in place of primary Ab (secondary Ab negative control).  
HIER: boil tissue sections in pH 9 10mM Tris with 1mM EDTA for 20 min and allow to cool before testing.



SDS-PAGE analysis of purified, BSA-free recombinant A2MR antibody (clone LRP1/8771R) as confirmation of integrity and purity.

## Description

Members of the LDL receptor gene family, including LDLR (low density lipoprotein receptor), LEP1 (low density lipoprotein related protein), megalin (also designated GP330), VLDLR (very low density lipoprotein receptor) and apoER2 are characterized by a cluster of cysteine-rich class A repeats, epidermal growth factor (EGF)-like repeats, YWTD repeats and an O-linked sugar domain. LRP1, also designated LRP and Alpha-2-Macroglobulin receptor, is an endocytic receptor that mediates the uptake of at least 15 ligands, including Alpha-2-Macroglobulin and apoE. LRP1 is cleaved into a membrane subunit and an extracellular subunit, which remain non-covalently associated. Proper folding and trafficking of LRP1 is facilitated by the receptor-associated protein (RAP), a molecular chaperone. The uptake of all known ligands through LRP1 can be blocked by RAP, which induces a conformational change in the receptor that renders it unable to bind ligands. LRP1, which is expressed in brain, liver and lung, is also implicated in Alzheimer s disease (AD), as the human LRP gene localizes to a potential AD locus on chromosome 12.

## Application Notes

Optimal dilution of the recombinant A2MR antibody should be determined by the researcher.

## Immunogen

A recombinant fragment of human protein was used as the immunogen for the recombinant A2MR antibody.

## Storage

Aliquot the recombinant A2MR antibody and store frozen at -20oC or colder. Avoid repeated freeze-thaw cycles.