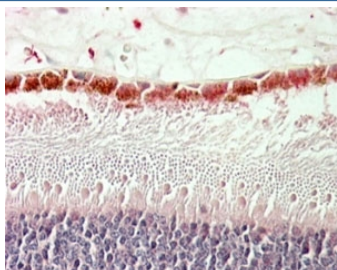


RDH5 Antibody (R35568)

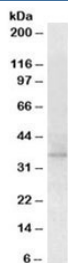
Catalog No.	Formulation	Size
R35568-100UG	0.5 mg/ml in 1X TBS, pH7.3, with 0.5% BSA (US sourced) and 0.02% sodium azide	100 ug

[Bulk quote request](#)

Availability	1-3 business days
Species Reactivity	Human, Mouse
Predicted Reactivity	Dog
Format	Antigen affinity purified
Host	Goat
Clonality	Polyclonal (goat origin)
Isotype	Goat Ig
Purity	Antigen affinity
Gene ID	5959
Applications	Western Blot : 2-4ug/ml Immunohistochemistry (FFPE) : 5-10ug/ml ELISA (peptide) LOD : 1:8000
Limitations	This RDH5 antibody is available for research use only.



IHC staining of FFPE human retina with RDH5 antibody at 5ug/ml. HIER: steamed with pH6 citrate buffer, AP-staining. Staining of the ganglion cell layer is observed.



Western blot testing of mouse eye lysate with RDH5 antibody at 2ug/ml.
Predicted/observed molecular weight: ~35kDa.

Description

Additional name(s) for this target protein: Retinol dehydrogenase 5

Application Notes

Optimal dilution of the RDH5 antibody should be determined by the researcher.

Immunogen

Amino acids RDRQSLPASNAFV were used as the immunogen for this RDH5 antibody.

Storage

Aliquot and store the RDH5 antibody at -20oC.