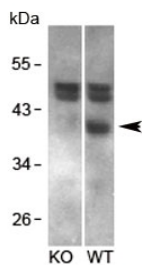


RCAN1 Antibody / Calcipressin 1 (R34203)

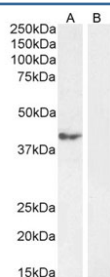
Catalog No.	Formulation	Size
R34203-100UG	0.5 mg/ml in 1X TBS, pH7.3, with 0.5% BSA (US sourced) and 0.02% sodium azide	100 ug

[Bulk quote request](#)

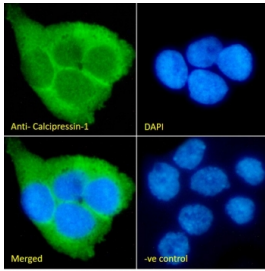
Availability	1-3 business days
Species Reactivity	Human, Mouse
Format	Antigen affinity purified
Host	Goat
Clonality	Polyclonal (goat origin)
Isotype	Goat Ig
Purity	Antigen affinity
Gene ID	1827
Applications	Western Blot : 1-3ug/ml IF/ICC : 10ug/ml Flow Cytometry : 10ug/ml ELISA (peptide) LOD : 1:32000
Limitations	This RCAN1 antibody is available for research use only.



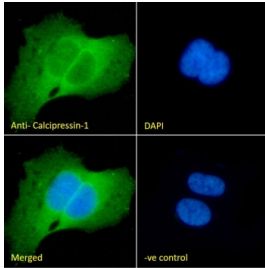
Western blot testing of mouse brain and KO mouse brain lysates with RCAN1 antibody at 1ug/ml.



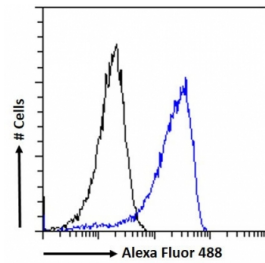
Western blot testing of human cerebellum tissue lysate in the absence (A) and presence (B) of immunizing peptide, with RCAN1 antibody.



IF/ICC staining of fixed and permeabilized human A431 cells with RCAN1 antibody (green) at 10ug/ml and DAPI nuclear stain (blue).



IF/ICC staining of fixed and permeabilized human U-2 OS cells with RCAN1 antibody (green) at 10ug/ml and DAPI nuclear stain (blue).



FACS testing of fixed and permeabilized human A431 cells with RCAN1 antibody (blue) at 10ug/ml and naive goat Ig (black).

Description

Additional name(s) for this target protein: Regulator of calcineurin 1, Calcipressin-1

Application Notes

Optimal dilution of the RCAN1 antibody should be determined by the researcher.

Immunogen

Amino acids HIGSSHLAPPNPD were used as the immunogen for this RCAN1 antibody.

Storage

Aliquot and store the RCAN1 antibody at -20oC.