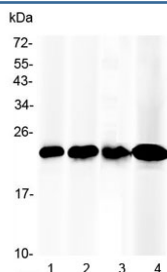


## RBP4 Antibody / Retinol Binding Protein 4 (R32882)

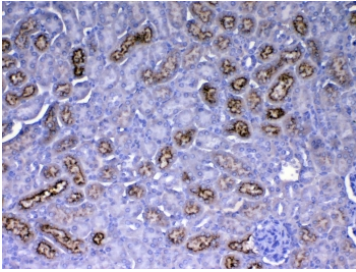
| Catalog No. | Formulation   | Size   |
|-------------|---|--------|
| R32882      | 0.5mg/ml if reconstituted with 0.2ml sterile DI water | 100 ug |

[Bulk quote request](#)

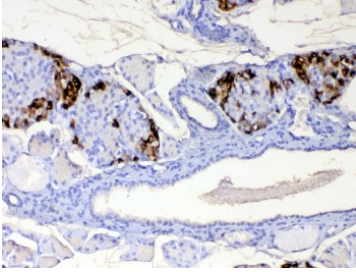
|                           |   |
|---------------------------|---|
| <b>Availability</b>       | 1-3 business days   |
| <b>Species Reactivity</b> | Human, Mouse, Rat   |
| <b>Format</b>             | Antigen affinity purified   |
| <b>Host</b>               | Rabbit  |
| <b>Clonality</b>          | Polyclonal (rabbit origin)  |
| <b>Isotype</b>            | Rabbit IgG  |
| <b>Purity</b>             | Antigen affinity  |
| <b>Buffer</b>             | Lyophilized from 1X PBS with 2.5% BSA, 0.025% sodium azide  |
| <b>UniProt</b>            | Q00724  |
| <b>Localization</b>       | Cytoplasmic   |
| <b>Applications</b>       | Western Blot : 0.5-1ug/ml<br>IHC (FFPE) : 1-2ug/ml<br>ELISA (Capture; Recombinant Mouse Protein) : 0.1-0.5ug/ml (BSA-free format available) |
| <b>Limitations</b>        | This RBP4 antibody is available for research use only.  |



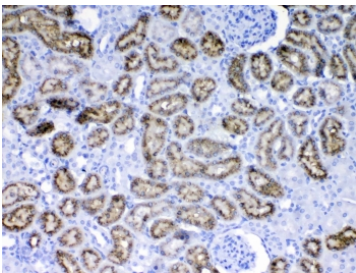
Western blot testing of 1) mouse liver, 2) rat liver, 3) human placenta and 4) human HepG2 lysate with RBP4 antibody at 0.5ug/ml. Predicted molecular weight ~23 kDa.



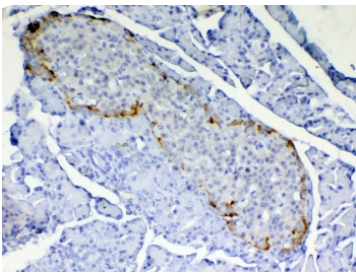
IHC testing of FFPE mouse kidney tissue with RBP4 antibody at 1ug/ml. Required HIER: steam section in pH6 citrate buffer for 20 min and allow to cool prior to testing.



IHC testing of FFPE mouse pancreas tissue with RBP4 antibody at 1ug/ml. Required HIER: steam section in pH6 citrate buffer for 20 min and allow to cool prior to testing.



IHC testing of FFPE rat kidney tissue with RBP4 antibody at 1ug/ml. Required HIER: steam section in pH6 citrate buffer for 20 min and allow to cool prior to testing.



IHC testing of FFPE rat pancreas tissue with RBP4 antibody at 1ug/ml. Required HIER: steam section in pH6 citrate buffer for 20 min and allow to cool prior to testing.

## Description

RBP4 is also known as RDCCAS. This protein belongs to the lipocalin family and is the specific carrier for retinol (vitamin A alcohol) in the blood. It delivers retinol from the liver stores to the peripheral tissues. In plasma, the RBP-retinol complex interacts with transthyretin which prevents its loss by filtration through the kidney glomeruli. A deficiency of vitamin A blocks secretion of the binding protein posttranslationally and results in defective delivery and supply to the epidermal cells.

## Application Notes

Optimal dilution of the RBP4 antibody should be determined by the researcher.

## Immunogen

A recombinant mouse protein corresponding to amino acids E19-L201 was used as the immunogen for the RBP4 antibody.

## Storage

After reconstitution, the RBP4 antibody can be stored for up to one month at 4oC. For long-term, aliquot and store at

-20oC. Avoid repeated freezing and thawing.