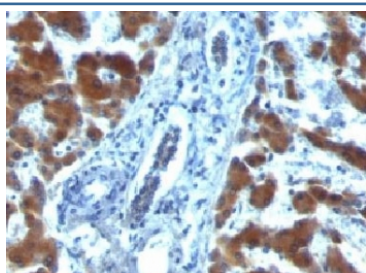


RBP1 Antibody / Retinol Binding Protein 1 [clone RBP/872] (V2828)

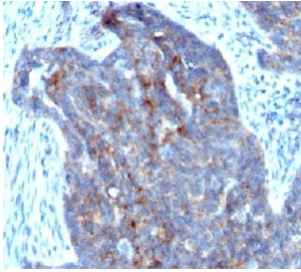
Catalog No.	Formulation	Size
V2828-100UG	0.2 mg/ml in 1X PBS with 0.1 mg/ml BSA (US sourced) and 0.05% sodium azide	100 ug
V2828-20UG	0.2 mg/ml in 1X PBS with 0.1 mg/ml BSA (US sourced) and 0.05% sodium azide	20 ug
V2828SAF-100UG	1 mg/ml in 1X PBS; BSA free, sodium azide free	100 ug
V2828IHC-7ML	Prediluted in 1X PBS with 0.1 mg/ml BSA (US sourced) and 0.05% sodium azide; *For IHC use only*	7 ml

Bulk quote request

Availability	1-3 business days
Species Reactivity	Human
Format	Purified
Clonality	Monoclonal (mouse origin)
Isotype	Mouse IgG1, kappa
Clone Name	RBP/872
Purity	Protein G affinity chromatography
UniProt	P09455
Localization	Cytoplasmic
Applications	Immunohistochemistry (FFPE) : 1-2ug/ml for 30 min at RT
Limitations	This RBP1 antibody is available for research use only.



IHC: Formalin-fixed, paraffin-embedded human hepatocellular carcinoma stained with RBP1 (clone RBP/872).



IHC: Formalin-fixed, paraffin-embedded human ovarian carcinoma stained with RBP1 (clone RBP/872).

Description

Recognizes a protein of 21kDa-25kDa, identified as retinol binding protein-1 (RBP1). This protein belongs to the lipocalin family and is the specific carrier for retinol (vitamin A alcohol) in the blood. It delivers retinol from the liver stores to the peripheral tissues. In plasma, the RBP-retinol complex interacts with transthyretin, which prevents its loss by filtration through the kidney glomeruli. A deficiency of vitamin A blocks secretion of the binding protein post-transnationally and results in defective delivery and supply to the epidermal cells.

Application Notes

Optimal dilution of the RBP1 antibody should be determined by the researcher.

1. Staining of formalin-fixed tissues requires boiling tissue sections in pH 9 10mM Tris with 1mM EDTA for 10-20 min followed by cooling at RT for 20 min.
2. The prediluted format is supplied in a dropper bottle and is optimized for use in IHC. After epitope retrieval step (if required), drip mAb solution onto the tissue section and incubate at RT for 30 min.

Immunogen

Recombinant human Retinol binding protein-1 was used as the immunogen for the RBP1 antibody.

Storage

Store the RBP1 antibody at 2-8oC (with azide) or aliquot and store at -20oC or colder (without azide).