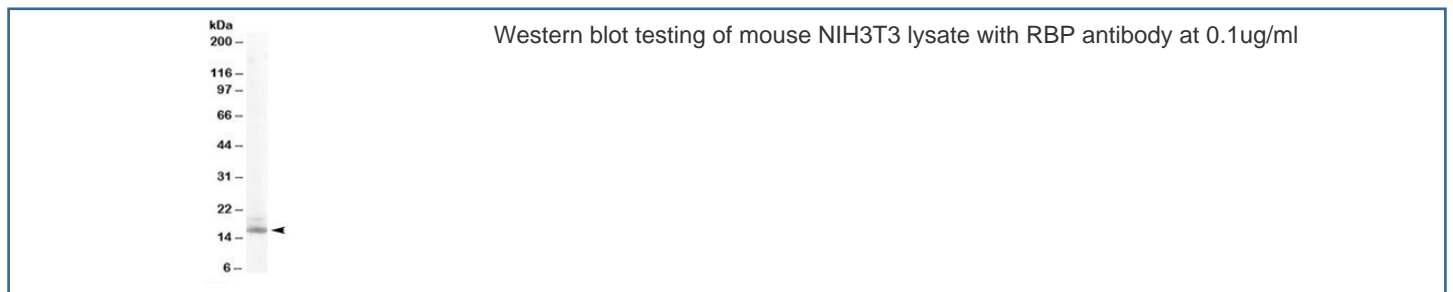


RBP Antibody / Retinol Binding Protein 1 (R36325)

Catalog No.	Formulation	Size
R36325-100UG	0.5 mg/ml in 1X TBS, pH7.3, with 0.5% BSA (US sourced) and 0.02% sodium azide	100 ug

[Bulk quote request](#)

Availability	1-3 business days
Species Reactivity	Human, Mouse
Predicted Reactivity	Cow
Format	Antigen affinity purified
Host	Goat
Clonality	Polyclonal (goat origin)
Isotype	Goat Ig
Purity	Antigen affinity
Gene ID	5947
Applications	Western Blot : 0.1-0.3ug/ml ELISA (peptide) LOD : 1:4000
Limitations	This RBP antibody is available for research use only.



Description

Additional name(s) for this target protein: Retinol binding protein 1; RBP

Application Notes

Optimal dilution of the RBP antibody should be determined by the researcher.

Immunogen

Amino acids VEGVVCKQVFKKVQ were used as the immunogen for this RBP antibody.

Storage

Aliquot and store the RBP antibody at -20oC.