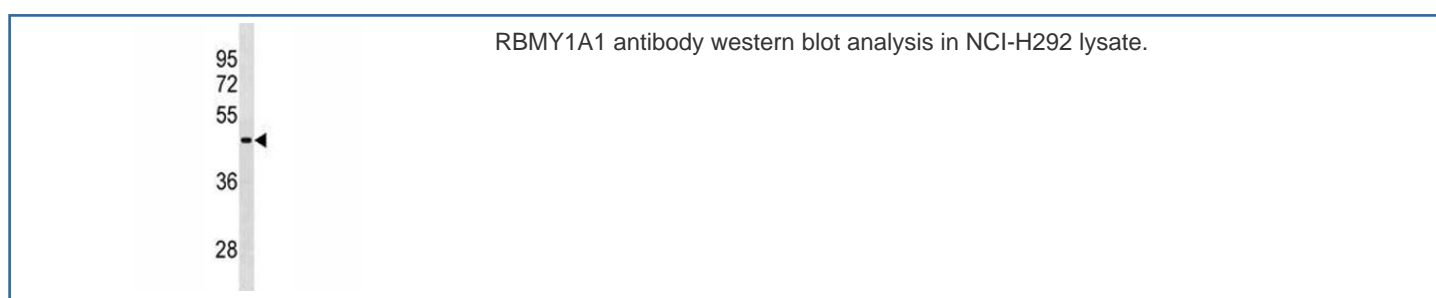


RBMY1A1 Antibody (F40054)

Catalog No.	Formulation	Size
F40054-0.4ML	In 1X PBS, pH 7.4, with 0.09% sodium azide	0.4 ml
F40054-0.08ML	In 1X PBS, pH 7.4, with 0.09% sodium azide	0.08 ml

[Bulk quote request](#)

Availability	1-3 business days
Species Reactivity	Human
Format	Antigen affinity purified
Clonality	Polyclonal (rabbit origin)
Isotype	Rabbit Ig
Purity	Antigen affinity
UniProt	P0DJD3
Applications	Western Blot : 1:1000
Limitations	This RBMY1A1 antibody is available for research use only.



Description

This gene encodes a protein containing an RNA-binding motif in the N-terminus and four SRGY (serine, arginine, glycine, tyrosine) boxes in the C-terminus. Multiple copies of this gene are found in the AZFb azoospermia factor region of chromosome Y and the encoded protein is thought to be involved in spermatogenesis. Most copies of this locus are pseudogenes, although six highly similar copies have full-length ORFs and are considered functional. Four functional copies of this gene are found within inverted repeat IR2; two functional copies of this gene are found in palindrome P3, along with two copies of PTPN13-like, Y-linked. [provided by RefSeq].

Application Notes

Titration of the RBMY1A1 antibody may be required due to differences in protocols and secondary/substrate sensitivity.

Immunogen

A portion of amino acids 468-496 from the human protein was used as the immunogen for this RBMY1A1 antibody.

Storage

Aliquot the RBMY1A1 antibody and store frozen at -20oC or colder. Avoid repeated freeze-thaw cycles.