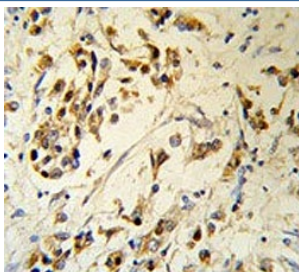


## RBM3 Antibody / RNA binding motif protein 3 (F54443)

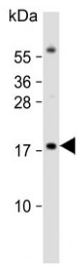
Catalog No.	Formulation	Size
F54443-0.4ML	In 1X PBS, pH 7.4, with 0.09% sodium azide	0.4 ml
F54443-0.08ML	In 1X PBS, pH 7.4, with 0.09% sodium azide	0.08 ml

[Bulk quote request](#)

<b>Availability</b>	1-3 business days
<b>Species Reactivity</b>	Human
<b>Format</b>	Purified
<b>Host</b>	Rabbit
<b>Clonality</b>	Polyclonal (rabbit origin)
<b>Isotype</b>	Rabbit Ig
<b>Purity</b>	SAS precipitation
<b>UniProt</b>	P98179
<b>Localization</b>	Nuclear, cytoplasmic
<b>Applications</b>	Western Blot : 1:500-1:2000 Flow Cytometry : 1:25 (1x10 <sup>6</sup> cells) Immunohistochemistry (FFPE) : 1:25
<b>Limitations</b>	This RBM3 antibody is available for research use only.



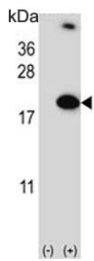
IHC testing of FFPE human breast carcinoma tissue with RBM3 antibody. HIER: steam section in pH6 citrate buffer for 20 min and allow to cool prior to staining.



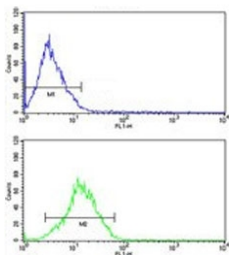
Western blot testing of human Jurkat cell lysate with RBM3 antibody. Predicted molecular weight ~17 kDa.



Western blot testing of mouse NIH 3T3 cell lysate with RBM3 antibody. Predicted molecular weight ~17 kDa.



Western blot testing of 1) non-transfected and 2) transfected 293 cell lysate with RBM3 antibody.



Flow cytometry testing of human MCF7 cells with RBM3 antibody; Blue=isotype control, Green= RBM3 antibody.

## Description

RBM3 is a member of the glycine-rich RNA-binding protein family and a protein with one RNA recognition motif (RRM) domain. Expression of this protein is induced by cold shock and low oxygen tension.

## Application Notes

The stated application concentrations are suggested starting points. Titration of the RBM3 antibody may be required due to differences in protocols and secondary/substrate sensitivity.

## Immunogen

A portion of amino acids 55-84 from the human protein were used as the immunogen for the RBM3 antibody.

## Storage

Aliquot the RBM3 antibody and store frozen at -20oC or colder. Avoid repeated freeze-thaw cycles.

