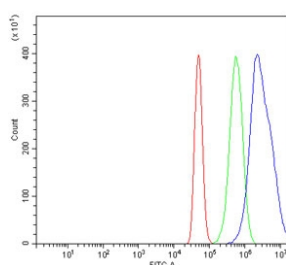


## RBM28 Antibody / RNA-binding protein 28 (RQ6676)

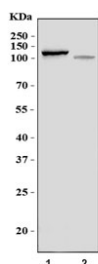
Catalog No.	Formulation	Size
RQ6676	0.5mg/ml if reconstituted with 0.2ml sterile DI water	100 ug

**Bulk quote request**

<b>Availability</b>	1-3 business days
<b>Species Reactivity</b>	Human
<b>Format</b>	Antigen affinity purified
<b>Clonality</b>	Polyclonal (rabbit origin)
<b>Isotype</b>	Rabbit IgG
<b>Purity</b>	Antigen affinity purified
<b>Buffer</b>	Lyophilized from 1X PBS with 2% Trehalose
<b>UniProt</b>	Q9NW13
<b>Applications</b>	Western Blot : 1-2ug/ml Flow Cytometry : 1-3ug/million cells Direct ELISA : 0.1-0.5ug/ml
<b>Limitations</b>	This RBM28 antibody is available for research use only.



Flow cytometry testing of human A431 cells with RBM28 antibody at 1ug/million cells (blocked with goat sera); Red=cells alone, Green=isotype control, Blue= RBM28 antibody.



Western blot testing of human 1) K562 and 2) HL60 cell lysate with RBM28 antibody. Predicted molecular weight ~86 kDa.

## Description

RNA-binding protein 28 is a protein that in humans is encoded by the RBM28 gene. The protein encoded by this gene is a specific nucleolar component of the spliceosomal small nuclear ribonucleoprotein (snRNP) complexes. It specifically associates with U1, U2, U4, U5, and U6 small nuclear RNAs (snRNAs), possibly coordinating their transition through the nucleolus. Mutation in this gene causes alopecia, progressive neurological defects, and endocrinopathy (ANE syndrome), a pleiotropic and clinically heterogeneous disorder. Alternatively spliced transcript variants encoding different isoforms have been found for this gene.

## Application Notes

Optimal dilution of the RBM28 antibody should be determined by the researcher.

## Immunogen

Recombinant human protein (amino acids E18-K584) was used as the immunogen for the RBM28 antibody.

## Storage

After reconstitution, the RBM28 antibody can be stored for up to one month at 4°C. For long-term, aliquot and store at -20°C. Avoid repeated freezing and thawing.